



# PlotVision

## User Documentation

PlotVision Version 5.0

**by Frank Torzinski**

<http://www.torro-softworks.com>

### GENERAL

PlotVision is a viewing, mark-up and conversion software supporting HP-GL, HP-GL/2, RTL, CGM, CGM+, DXF, Calcomp 907, TIFF, JPEG, EMF, WMF, BMP

TIFF Import and Export uses the TIFF Library by:

Copyright (c) 1990-1997 Sam Leffler

Copyright (c) 1991-1997 Silicon Graphics, Inc.

Permission to use, copy, modify, distribute, and sell this software and its documentation for any purpose is hereby granted without fee, provided that

(i) the above copyright notices and this permission notice appear in all copies of the software and related documentation, and

(ii) the names of Sam Leffler and Silicon Graphics may not be used in any advertising or publicity relating to the software without the specific, prior written permission of Sam Leffler and Silicon Graphics.

JPEG-Im- and -Export uses:

The Independent JPEG Group's JPEG software release 6b of 27-Mar-1998

This software is the work of Tom Lane, Philip Gladstone, Jim Boucher,

Lee Crocker, Julian Minguillon, Luis Ortiz, George Phillips, Davide Rossi,

Guido Vollbeding, Ge' Weijers, and other members of the Independent JPEG Group.

[www.TIFF.org](http://www.TIFF.org)

### CONTENTS

1. SYSTEM REQUIREMENTS
2. LIST OF FILES
3. OVERVIEW
4. INSTALLATION INSTRUCTIONS
5. MENU FUNCTIONS
6. Trial Version
7. End User License Agreement (EULA) for Torro-Softworks Software Products
8. Software Maintenance and Support Agreement

## 1. SYSTEM REQUIREMENTS.

This program runs on any PC with Windows 95/98, ME, Windows NT, NT2000.

## 2. LIST OF FILES.

File	Description
PLOTVISION_e7.pdf	Software Documentation PDF format (this file).
PLOTVISION_g7.pdf	German Documentation PDF format .
PLOTV_E.HLP	English helpfile.
PLOTV_G.HLP	German helpfile.
PLOTV_F.HLP	French helpfile.
PLOTVISION.EXE	Windows-Plotfile-Manager.
COLUMBIA.PLT	Demo HP-GL/2 -plot file.
CHROMA.DXF	Demo dxf file.
Cadalyst.plt	Demo Calcomp file
Electro.cgm	Demo CGM file
INSTALL.EXE	Installation program.
INSTALL.CFG	Information for the above.
UNINSTALL.EXE	Uninstallation program
UNINSTALL.CFG	Information for the above
ROLLBACK.EXE	Reinstalls old file extensions

## 3. OVERVIEW

- PlotVision is a utility designed to view plotfiles that use the Hewlett Packard-Graphic Language/2 (this includes the older HP-GL).
- PlotVision reads the whole picture in to the memory therefore requiring sufficient computer memory (128MB or more).
- PlotVision reads HPGL, HPGL/2, RTL, CGM (Computer Graphics Metafile), CGM+, Calcomp 907, DXF (AutoCAD 12, 2D), TIFF and JPEG.
- PlotVision exports TIFF, BMP, WMF, Enhanced WMF, CGM, DXF and HPGL/2.
- PlotVision converts DXF to HPGL and vice versa.
- PlotVision copies screen contents to a Windows Metafile or BMP on the clipboard.
- PlotVision includes an option to associate extensions with Windows Explorer so when you double click on that file type in Explorer it will open in Plotvision.

### Print features

- Print Screen Contents prints whatever is currently on the screen, whether it is the full drawing or a zoomed portion. The print is scaled to fit the paper in your chosen printing device.
- Copy File to Printer sends a file to a printer "As Is". In addition to plotting HPGL files in this way you can print file formats that WPM32 can't read but that are understood by the printer - for example you can use it to print a PostScript file to a PostScript printer.
- Prints multiple copies.
- Scale prints drawings to the size you specify.
- Tiles drawings too big to fit on the paper.
- Option to print all pens as black so you can print faint colors like yellow to a laser printer.

## Edit / Redline features

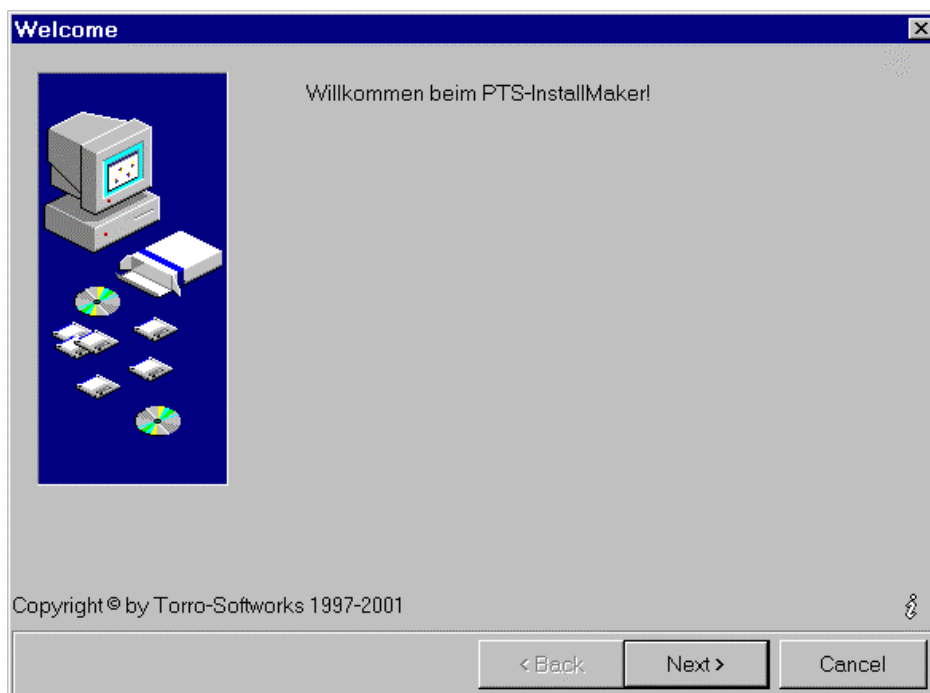
- Rotate by 0, 90, 180 or 270 degrees; mirror.
- Add redlines - lines, polylines, rectangles, stars, circles, text, text in a rectangle, undo.
- Specify redline color and redline pen width.
- Save redlines into a separate file.
- Edit pen properties - change pen widths, colors and color definitions.

## Display options

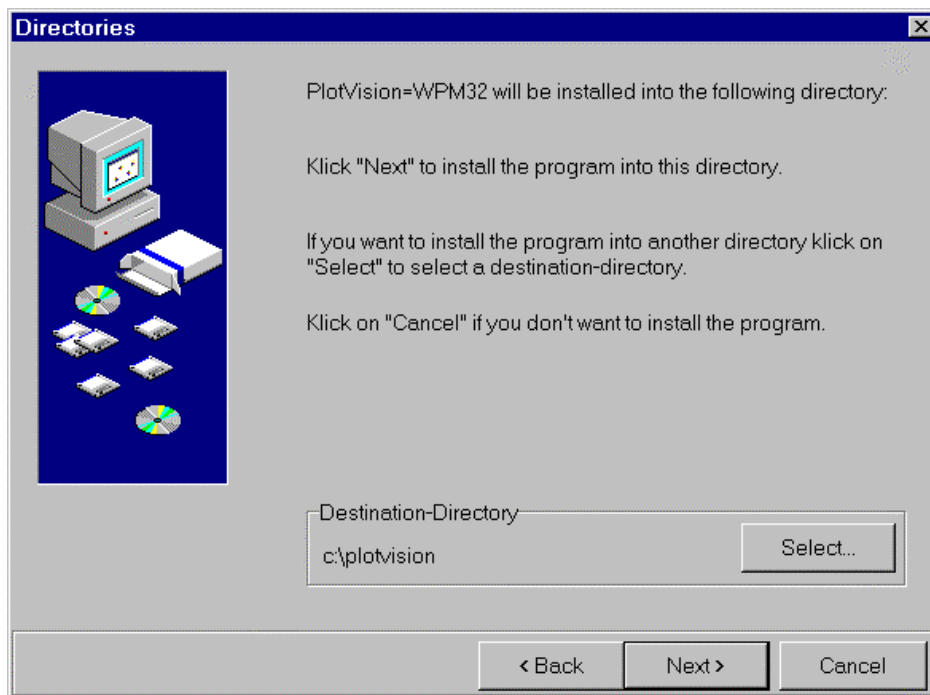
- Display frame showing chosen paper size.
- Isotropic (preserve drawing proportion) or Anisotropic (use whole screen) modes.
- Set background to black or white.
- Zoom, zoom window, pan, magnify, demagnify.
- Set language to English, German, French or Swedish.

## 4. INSTALLATION

1. Place the CD in your CD-ROM  
or run plotvisionsetup.exe which you have downloaded from the web.  
Note: You can download the latest version of PlotVision from [www.torro-softworks.com](http://www.torro-softworks.com) or [www.epic-isti.com](http://www.epic-isti.com).
2. If Autoplay is active the installation will start immediately. Or, open run ... and choose plotvisionsetup.exe from the root directory of your CD-ROM.
3. The Installation assistant welcomes you. Click on **Next**



4. Select the installation directory or simply click next.



5. The Assistant installs the software.

6. The registration dialog appears.

- a. If you are not a registered user, click twice on "Proceed".
- b. If you have a registration key input it and then click "Register now".

To Register:

Type your user name into the Registered User field.

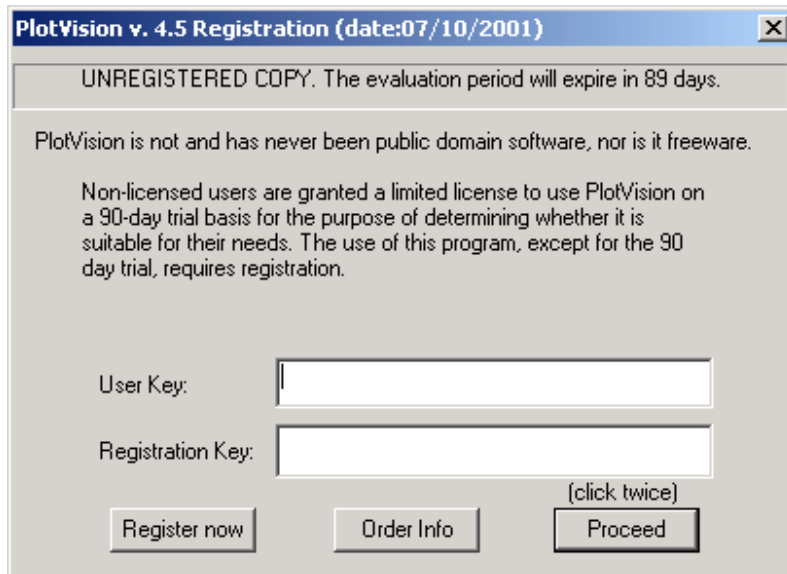
Your user name is case-sensitive and must be entered exactly as supplied.

You can ensure that it's entered correctly by copying it out of the email and pasting it into the Registered User field. To paste it into the Registered User field click in the field and press Shift+Insert on your keyboard.

Type your registration key into the Registration Key field.

Your registration key is case-sensitive and must be entered exactly as supplied. You can ensure that it's entered correctly by copying it out of the email and pasting it into the Registration Key field. To paste it into the Registration Key field click in the field and press Shift+Insert on your keyboard.

Click on Register now to exit the dialog.



You can test the full program in demonstration mode for an evaluation period of 90 days. After 90 days, the demonstration program will terminate.

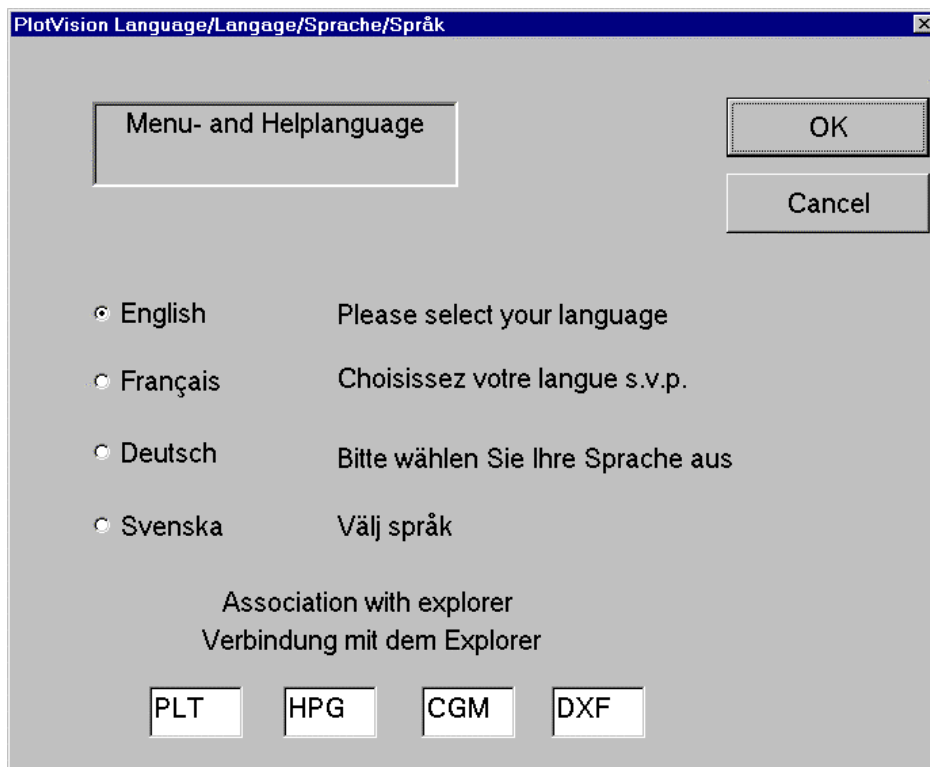
To purchase the program contact your local reseller:



## SELECTION OF MENU AND HELP LANGUAGE

At the first startup, the PlotVision language dialog box is displayed. Please select your preferred language. English is the default setting. The association with Explorer connects the chosen files extension with the Explorer. Once the association is made, a double click of a file (such as columbia.plt) opens this plotfile with PlotVision. You can also reach this dialog box from [Config / Association with Explorer](#). You can choose the extensions you need associated.

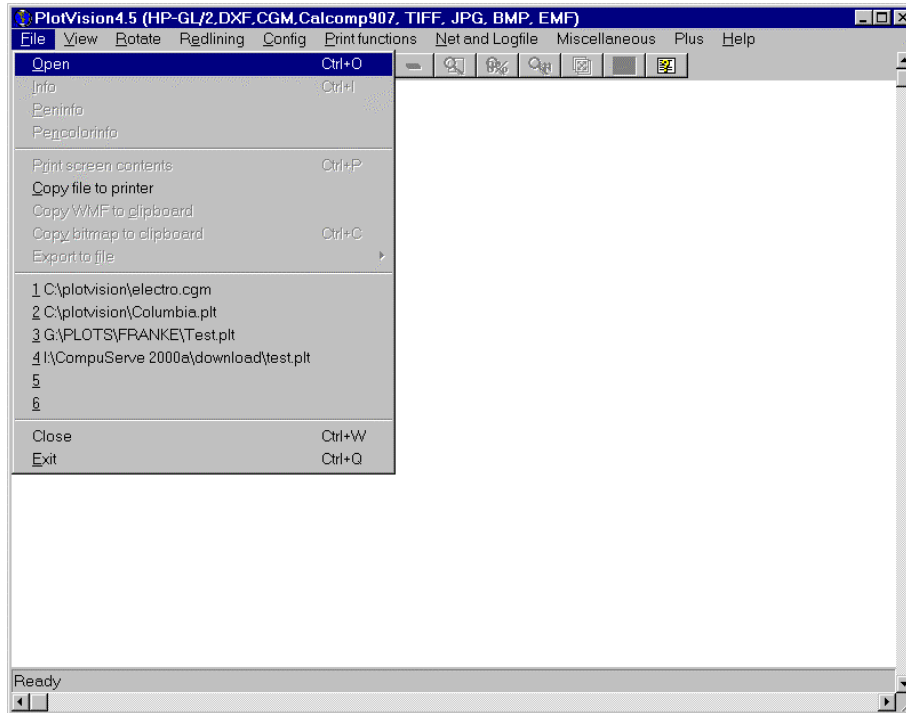
You can undo the associations with Explorer using the attached program rollback.exe at any time.



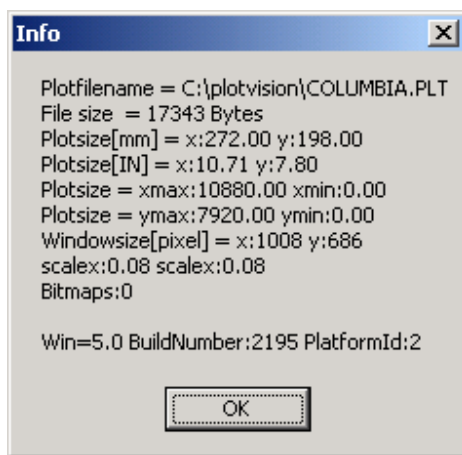
## 5. MENU FUNCTIONS:

### File

**Open** calls the windows standard open-dialog. You can also open associated files from Explorer. Additionally, you may call PlotVision with a plotfile name as argument. PlotVision is an explorer helper application.



**Info** displays additional information about the plotfile.



**Plotfilename** – displays the name of the file loaded.

**File size** – displays the file size in Bytes.

**Plotsize[mm]** – displays the size of the plot in millimeters.

**Plotsize[IN]** – displays the same, only in inches.

Plotsize = xmax: ... xmin: - displays the drawing size in plotter steps (plotter units) along the X-axis.

Plotsize = ymax: ... ymin: - displays the drawing size in plotter steps (plotter units) for the Y-axis.

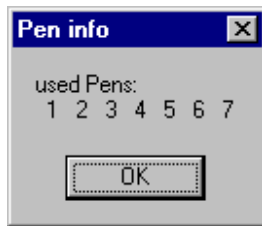
Windowsize[pixel] = x: ... y: ... – displays the current window size.

scalex: ... scaley: ... – displays the scale factor for the current drawing on the screen.

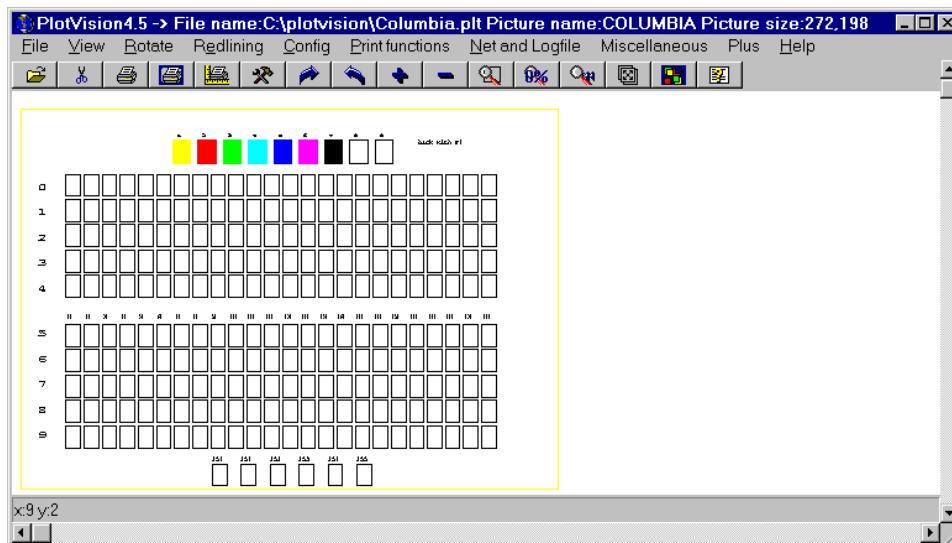
**Bitmaps:** The number of Bitmaps in the loaded plotfile.

**Win = ....** Detailed information about your operating system.

**Peninfo** lists pen numbers used. In the file columbia.plt these are pens 1, 2, 3, 4, 5, 6 and 7.



**Pencolorinfo** displays the pens used with their assigned colors. In this example, the colors 1 to 7. Exit this function with F4 or a click on the right mouse button.

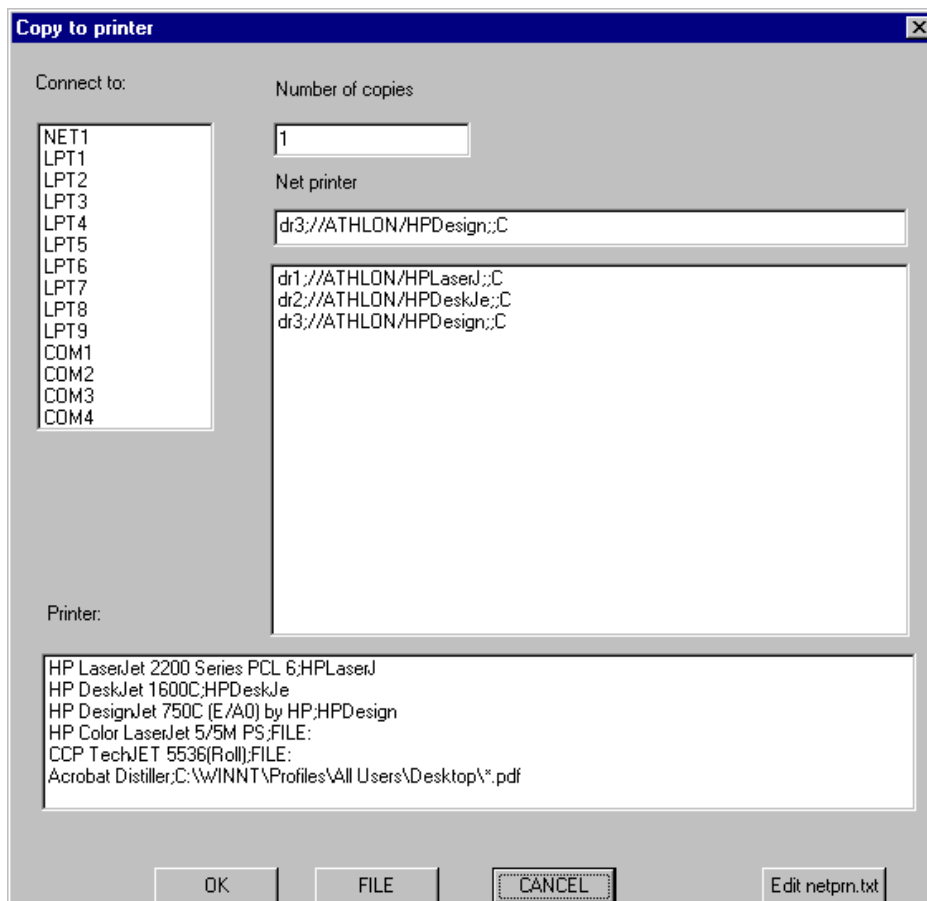


**Print screen contents** sends the contents of the screen to your printer. The default is to scale the plot to fill the paper.

**Note:** Menu **Config / Set configuration / Print only black** sets all colors to black white printing.

For enhanced print demands, please use the **print functions** such as **multi print** and **scale print**.

**Copy file to printer** copies the whole file to the printer. To do this, you must select the appropriate port. This is useful if you have the correct printer/plotter for this plot file. This function also makes it possible to send the plotfile, shown on the screen to a printer on the network. The names of the printers are saved in the file c:\netprn.txt. This is a simple text file. You may change this with any ASCII editor. It is limited to 100 names. You can set the name of this file with **Config / Netprint and logfile / Name of the file for printer names**.



The name of the printer may also have the following syntax: **dr1;LPT1;A4;Portrait**

This means:

**dr1** = printer configuration number 1

**LPT1** = Name of the connection

**A4** = paper size, legal values are:

LETTER, LEGAL, A4, EXECUTIVE, LEDGER, A3, COM10, C5, DL, MONARCH, B5, CUSTOM, JISB4, JISB5, JPOST, JPOSTD

**Portrait** = Portrait or Landscape (1. Letter is enough)

**Note:** [Copy file to printer](#) is useful with HPGL files and the printer or plotter they are made for. The printer configuration is made through the Printer Job Language. PJP commands are recognized by the following HP printers:

- LaserJet III Si, 4 Si, 4 SiMx, 5 Si, 5 SiMx
- LaserJet 4V, 4MV
- LaserJet 4, 4Plus, 4M, 4M Plus
- LaserJet 4L, 4ML, 4LJ Pro, 4LC
- LaserJet 4P, 4MP, 4PJ, 5P
- Color LaserJet
- DeskJet 1200C und 1600C und DesignJet Familie
- PaintJet XL300

The name of the printer may also have the following syntax:

[dr1; //computername/printername; A4; Portrait](#)

This means:

[dr1](#) = set printer configuration 1

[HPDesk](#) = name of the printer in the network

[A4](#) = paper size, legal values are:

A4, A5, A3, LEDGER, LETTER, LEGAL, EXECUTIVE, B4, B5, C, D, E

[Portrait](#) = Portrait or Landscape (1. Letter is enough)

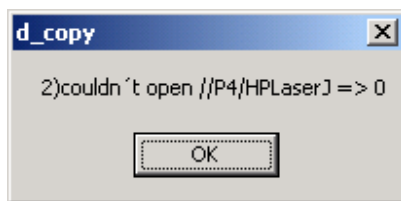
Instead of P or H you may insert a C (like Clean) – this avoids any changes of the plotfile (no added Printer Job Commands).

This makes it possible to call PlotVision in the background and set printer values.

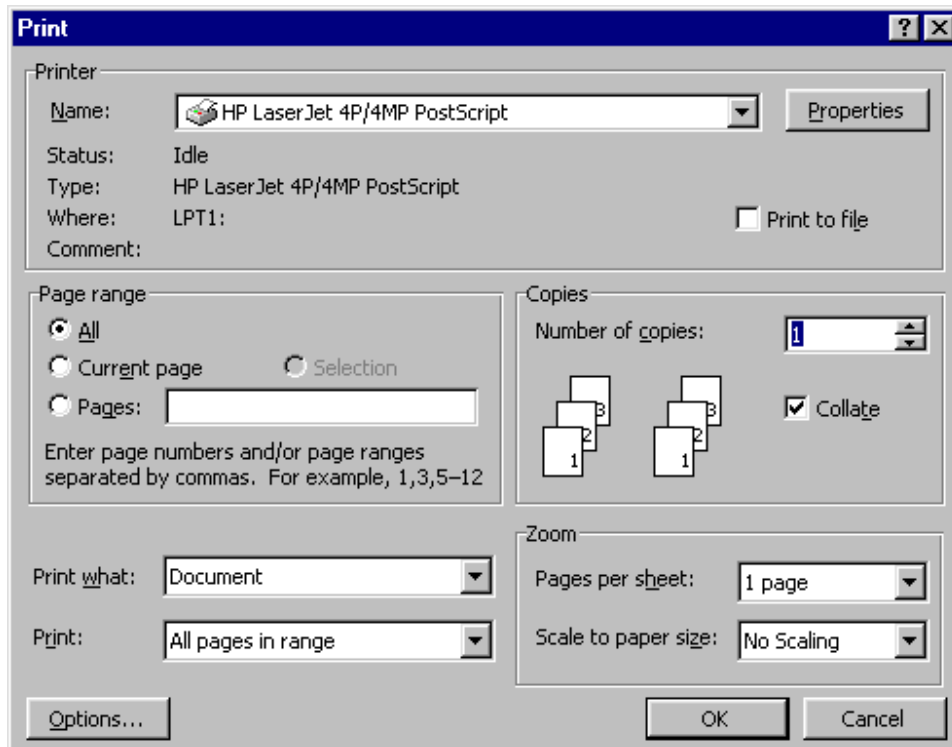
For example: PlotVision <filename> dr1 executes PlotVision in the background and prints the file to the printer with the values of dr1.

[FILE](#) lets you select a file that is not interpreted by PlotVision – such as PostScript – but is understood by your printer/plotter.

**Note:** If you get this message:



Make sure, that your printer is free:



[Copy WMF to clipboard](#) exports the drawing on the screen to a Windows Metafile on the clipboard. This is a faster because the WMF is written in to memory, not to disk. This is a useful way to exchange data with other Windows programs such as Corel Draw, AutoCAD, Word etc.

This can also be done in a batch process. The program call is: "PlotVision filename -wmf". This runs PlotVision with the named file, creates a wmf file with the name and suffix .wmf and exits. The size of the wmf is accordingly to the size of the original plot. You may add a header to the wmf file by activating "Placeable wmf" in the configuration.

[Copy bitmap to clipboard](#) exports the drawing on the screen to a Bitmap on the clipboard. This is a useful way to exchange data with other Windows programs such as Corel Draw or Word.

## Export to file *(includes 9 sub menu items)* :

**TIFF Tag Image File Format** exports the drawing on the screen in TIFF format to a file.

Size of the tiff file:

- Insert the size in pixels in the 2<sup>nd</sup> configuration and select "x\*y" in "resolution in dots per inch". For example 2048 and 1536.
- Select 75, 150, 300 or 600 dpi.

### **Additional in the Plus Version:**

This task can also be done also in the background. The program call is:  
"PlotVision filename -TIFF".

This runs PlotVision with the named file, creates a TIFF file with the same name and the suffix .tif and quits. The values from the configuration for pen colors, pen width, paper size etc. are used.

**BMP Bitmap file** exports the drawing on the screen to in BMP format to a file. You may use this bitmap in to other programs as paintbrush or Word.

### **Additional in the Plus Version:**

This task can be done also in the background. Program call is:  
"Plotvision filename –BMP"

This runs PlotVision with the named file, creates a BMP file with the same name and the suffix .bmp and quits. The values from the configuration for pen colors, pen width etc. are used.

**WMF Windows MetaFile** exports the drawing on the screen to a Windows MetaFile. This is a way to exchange data with other windows programs such as Corel Draw, AutoCAD, Word, etc.

### **Additional in the Plus Version:**

This task can be done also in the background. Program call is:  
"Plotvision filename –wmf"

This runs PlotVision with the named file, creates a WMF file with the same name and the suffix .wmf and quits. The values from the configuration for pen colors, pen width etc. are used.

**EMF Enhanced Windows MetaFile** exports the drawing on the screen to an Enhanced Windows MetaFile. This is a way to exchange data with other windows programs such as Corel Draw, AutoCAD, Word, etc.

### **Additional in the Plus Version:**

This task can be done also in the background. Program call is:  
"Plotvision filename –emf"

This runs PlotVision with the named file, creates a EMF file with the same name and the suffix .emf and quits. The values from the configuration for pen colors, pen width etc. are used.

HP-GL (older HP-GL without Polyline Encoded commands) exports the drawing on the screen to a plotfile. (See details of HP-GL/2 below.)

**Additional in the Plus Version:**

This task can be done also in the background. Program call is:

“Plotvision filename –HPGL1”

This runs PlotVision with the named file, creates a HP-GL file with the same name and the suffix .pl1 and quits. The values from the configuration for pen colors, pen width etc. are used.

HP-GL/2 exports the drawing on the screen to a plotfile. At first you must select the paper size. You may select a standard size like A4...A0 and the orientation (landscape or portrait), or fill in a x- and y-size yourself.

This task can be done also in the background. Program call is: "PlotVision filename -HPGL".

This runs PlotVision with the named file, creates a HP-GL/2 file with the same name and the suffix .plt and quits. The values from the configuration for pen colors, pen width, paper size etc. are used.

**Additional in the Plus Version:**

This task can be done also in the background. Program call is:

“Plotvision filename –HPGL”

This runs PlotVision with the named file, creates a HP-GL file with the same name and the suffix .pl2 and quits. The values from the configuration for pen colors, pen width etc. are used.

DXF exports the drawing on the screen to a DXF file.

**Additional in the Plus Version:**

This task can be done also in the background. Program call is:

"PlotVision filename -dxf".

This runs PlotVision with the named file, creates a DXF file with the same name and the suffix .dxf and quits. The values from the configuration for pen colors, pen width etc. are used.

In the 2nd configuration (**Config / Set configuration / 2nd Configuration**) you will find also a DXF output factor.

There, you may choose to insert a factor for output 1 or .025 for example.

CGM Computer Graphics Metafile exports the drawing on the screen in to a binary encoded Computer Graphics Metafile.

JPEG exports the drawing on the screen to a .JPG file.

**Additional in the Plus Version:**

This task can be done also in the background. Program call is:

"PlotVision filename -JPEG".

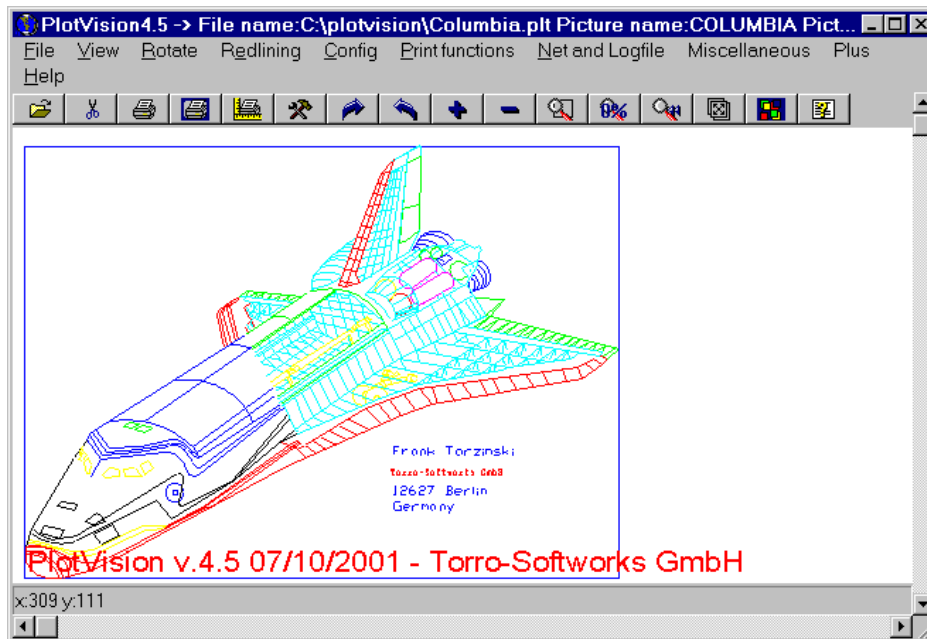
This runs PlotVision with the named file, creates a JPEG file with the same name and the suffix .jpg and quits. The values from the configuration for pen colors, pen width etc. are used.

(the last 6 viewed files), to select one of the last six files opened.

Close closes the current active window.

Exit exits PlotVision

## View



Zoom window, "Zoom window" is always active. Press the left mouse key and drag to create a zoom rectangle. The contents of this rectangle fills the entire window. This feature (the always active of zoom window can be turned OFF in the Config menu (**Config / Instant zoom**), so that you must choose **View / Zoom window** before zooming. (See screen shot below.)

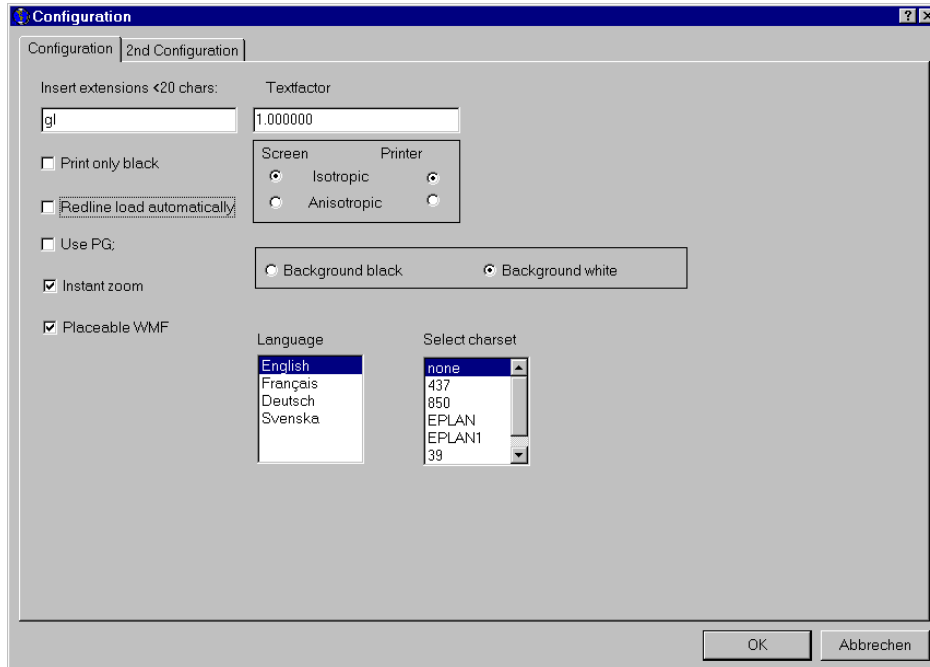
Zoom all displays the entire drawing. This function is also available by depressing the right mouse key.

Zoom last displays image using the previous zoom setting.

**Pan** presents the pan tool. Press the left mouse button and drag the first point to the place you would like to pan to then release the mouse button.

Shortcuts are:

- ⇒ zoom Window = left mouse button,
- ⇒ zoom all = right mouse button



Here you find Instant zoom (**Config / Instant zoom**):

Additional features:

The arrow-keys move the picture in the arrow-direction.

Plus (+) on the numeric keys makes the image larger.

Minus (-) on the numeric keys make the image smaller.

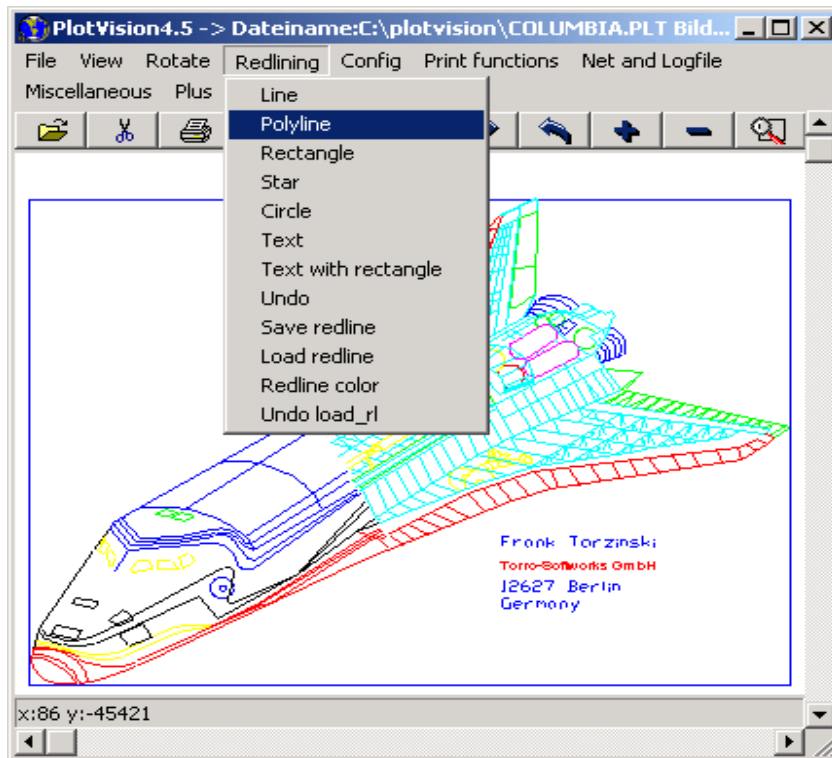
(Only useful, when in anisotropic mode)

F11 shows the left part of the picture.

F12 shows the right part of the picture.



## Redlining (Editing)



**Line** is used to draw a line. Just press the left mouse button and drag the rubberband to the end of the line, release the mouse button. This function displays a pen cursor.

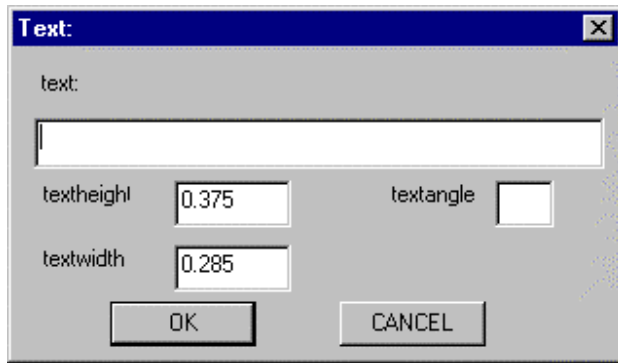
**PolyLine** is used to draw a polyline. Just press the left mouse button and drag the rubberband to the end of the line, release the mouse button. Repeat as often as necessary. The start point of the next line will be set to the end point of the last line. This function displays a pen cursor.

**Rectangle** is used to draw a rectangle. Press the left mouse button and drag the rubber rectangle left or right then release the mouse button. This function displays a rectangle cursor.

**Star** is used to draw a star. Press the left mouse button and drag the rubber star to the size you like it then release the mouse button. This function displays a star cursor.

**Circle** is used to draw a circle. Press the left mouse button and drag the rubber circle to the size you like it, release the mouse button. This function displays a circle cursor.

**Text** is used to add text. Fill in the text dialog box and select the starting point of the text with a press of the left mouse button. This function displays a text cursor. Default value for the text angle is zero.



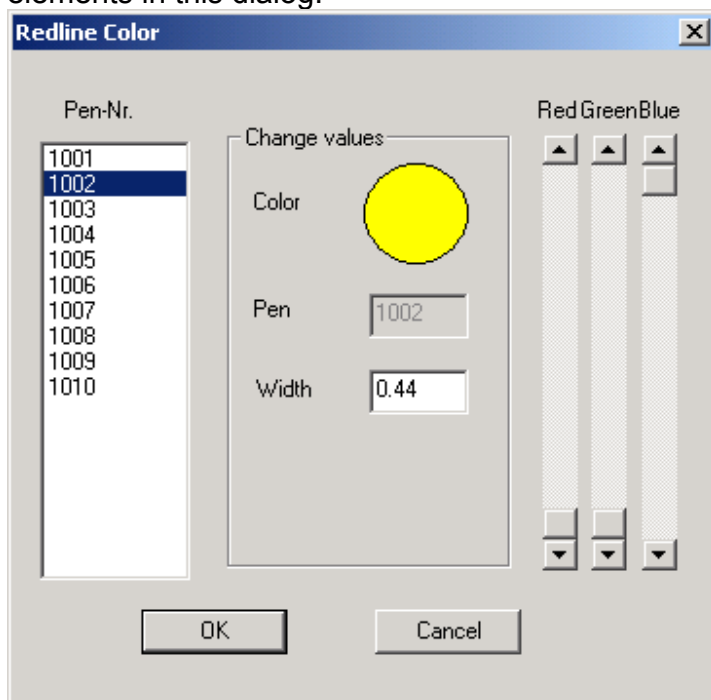
**Text with rectangle** is used to add text enclosed in a rectangle. The text will be fitted in to the rectangle that is to draw. Fill in the text dialog box and select the start point of the text with a press of the left mouse button. This function displays a text cursor. The default value for the text angle is zero.

**Undo** allows you to delete any redline element. This function displays a rectangle cursor. Use it to select the redline item you want to delete.

**Save redline** saves the redline elements in to a separate file with the name of the plotfile and the extension \*.red.

**Load redline** loads the redline elements from a separate file with the name of the plot file and the extension \*.red. This may happen automatic at the load time of the plot file (See **Config / Set configuration / Redline load automatically**).

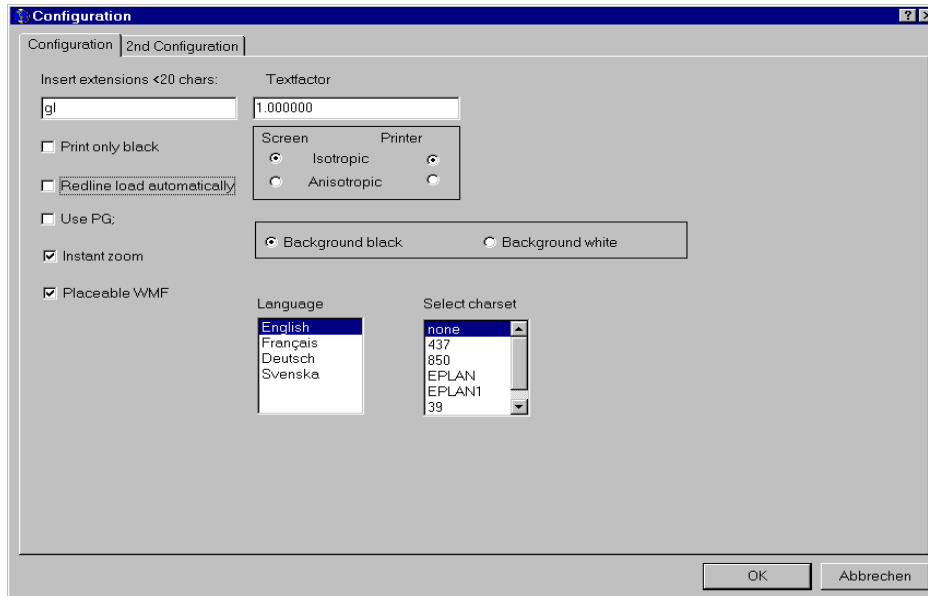
**Redline color** allows you to change the color and the pen width in mm for the redline-elements in this dialog.



**Undo load\_rl** deletes all redlined elements.

# Config

Set configuration:



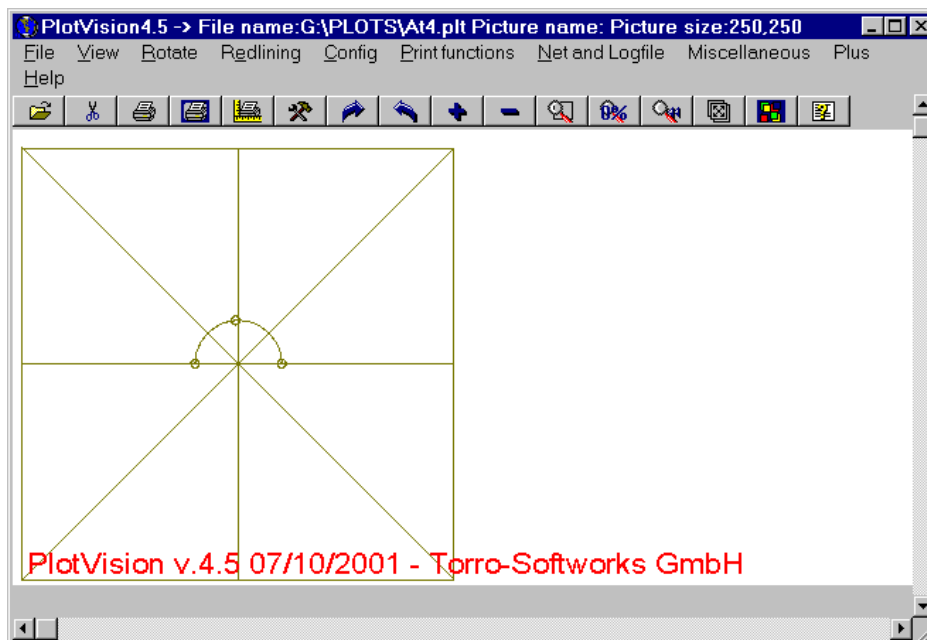
**Insert extension** allows you to insert the common extensions for your plot files. They will be used in the file-open-dialog. There is room for 20 characters.

For example. gl;\*.plt;\*.gl2;\*.h

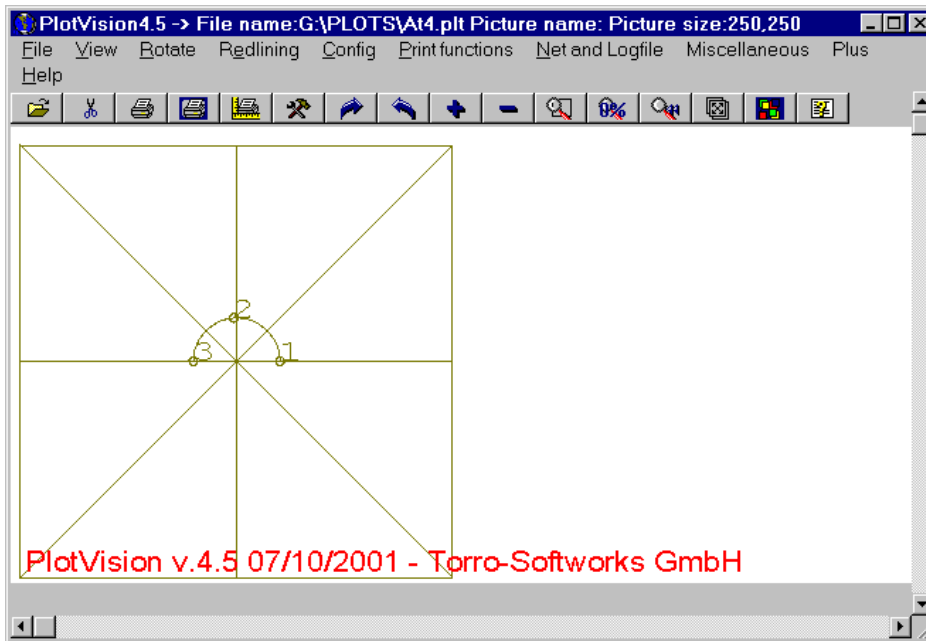
The result is (probably in English or your language):



**Textfactor** can be used to adjust the size of the fonts to your needs. The text must be from the HP-GL-LB-command (LaBel) or from the redline functions(!). For example. file aa\_test.plt with Textfactor 1.0



And now with textfactor 10.0

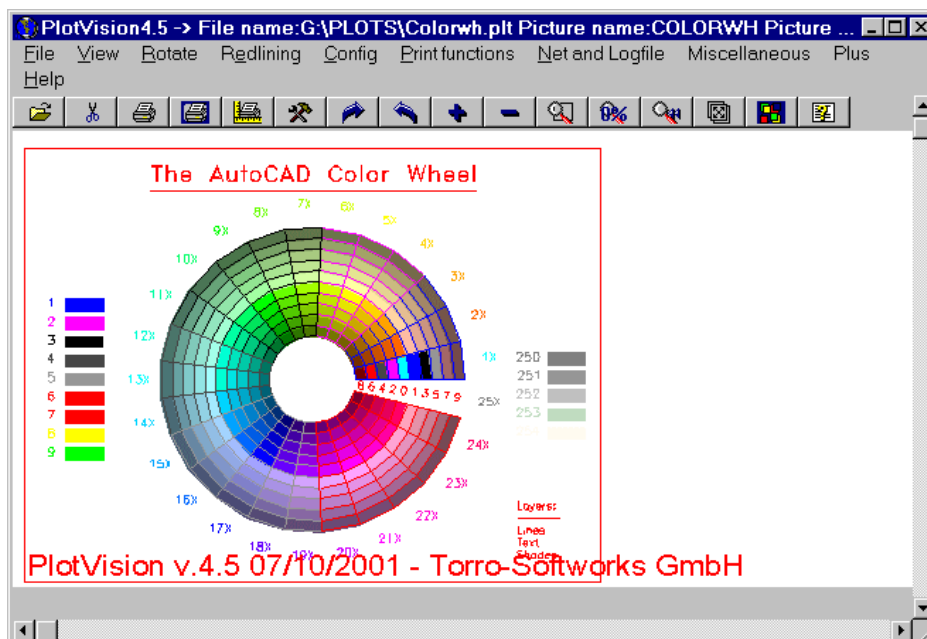


**Print only black:** Yellow lines on white paper may not show up well depending on your printer. This switch will print everything on the screen in black.

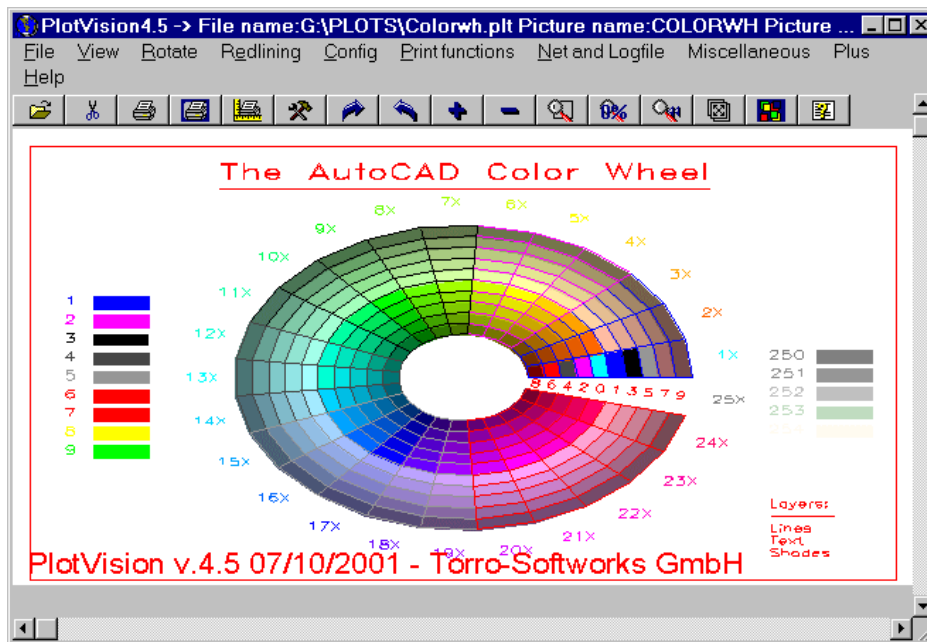
**Iso/anisotropic:** Isotropic preserves the proportion of the drawing – Anisotropic uses the whole screen.

Both items can be selected for the view on the screen and the output to the printer (via print screen contents).

**Isotropic:**



## Anisotropic:



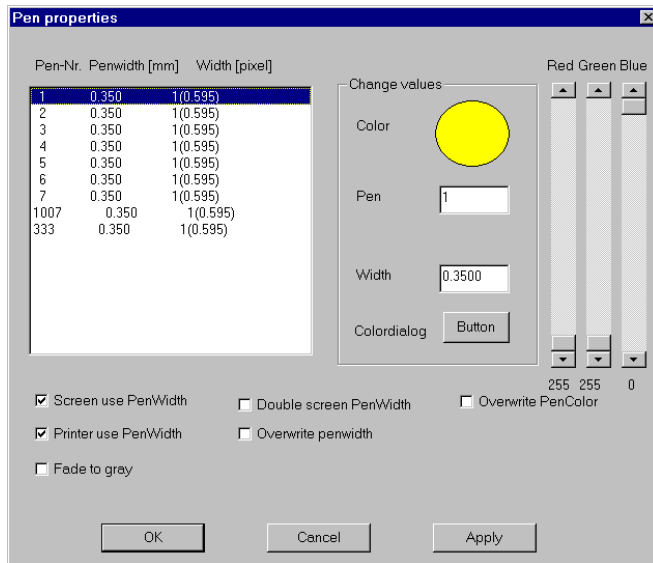
**Use PG:** If this option is activated, HPGL files with several layers will now be displayed, with one instance of the program per layer. But there are printer drivers for some printers that will require that you turn this off.

**Instant zoom** (explained above)

**Background black and Background white** changes the background color.

**Language (English, French, Swedish and German)** makes it possible to change the menu- and dialog-language.

**Pen properties** displays the dialog to change all the pen properties. You can change: PenWidth, PenColor and the definition of pen colors.



**Screen use PenWidth** determines whether the information about the pen width will be shown on the screen or not.

**Printer use PenWidth** determines whether the information about the pen width will be printed or not.

**Fade to gray:** Large drawings (for example A size) fit to the screen would have all lines on the screen with less than 1 pixel rounded up to 1. To distinguish them they fade to gray the thinner they are.

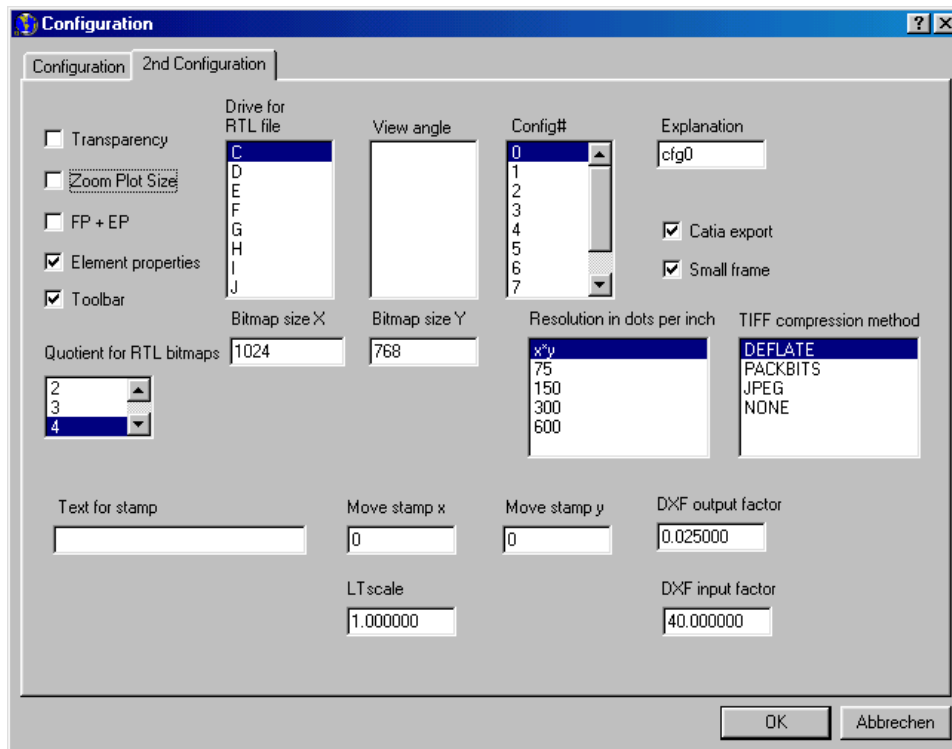
**Double Screen PenWidth** is sometimes useful with large plots

**Overwrite pen width** makes it possible to define a configuration for your pen width. Older pen plotters do not include any pen width information. So this option allows you to define your own..

**Overwrite pen color** makes it possible to define a configuration for your pencolors. Older pen plotters do not include any color information. This option allows you to define your own pen color information.

You may use the normal color dialog or the scrollbar.  
You must click the APPLY-button after each change of pen color.

## 2<sup>nd</sup> Configuration



**Drive for temporary RTL file:** To convert RTL Bitmaps in to Windows Bitmaps which are displayed on the screen, PlotVision writes a temporary file to the hard disk. Here you can select your fastest hard disk or the one that has enough space to hold this temporary file.

**View angle:** PlotVision ignores the hgpl RRotation command. It has the possibility to rotate the screen from the menu. To avoid a rotation after every "load file" here you may select a default value.

**Quotient for RTL bitmaps:** Large RTL files become much larger when they are converted to bitmaps. To save disk place and time it is possible to select a quotient. For example: A RTL file with 150 MB one should select quotient 3. For a RTL file with 450 MB it is advisable to select quotient 4.

**Transparency** makes it possible to select between 2 different foreground mix modes. This is sometimes useful - depending on the plotfile (for example, if there is text inside filled rectangles).

**Zoom Plot Size:** If selected, the drawing is shown as it would be on the paper - sometimes a small drawing in one corner of a big sheet of paper. If deselected, the drawing is shown as big as possible on the screen.

**FP + EP:** If selected, will fill every Polygon – command added by Egde Polygon.

**Bitmap size X** and **Bitmap size Y**: Lets you define the size in dots for TIFF Export. To do that “by hand” set “resolution in dpi” to x\*y.

**Resolution in dots per inch**: The file will be exported to TIFF with the selected resolution. Bitmap size X and Y are ignored.

**Config#**: Lets you select a configuration. So you may use in fact not only one configuration with different pen colors, width etc. but 10.

**Explanation**: To distinguish the ten different configurations you may add an Explanation to each.

**Catia export**: Was necessary to export DXF properly from CATIA (IBM’s CAD program, a workaround).

**Small frame**: To view the lines around a drawing you may add a small frame around the picture on the screen. For export or measure print please disable this feature to be sure to print or export absolute exactly.

**TIFF compression method**: Lets you select the compression method use while exporting TIFF. They are sorted with the most efficient method at top.

**Text for stamp**: Lets you print every drawing with an additional stamp. It contains: file ame, day, month, year, hour, minute **and** the text you add here.

**Move stamp x**: moves the stamp according to the value inserted here in the x-direction.

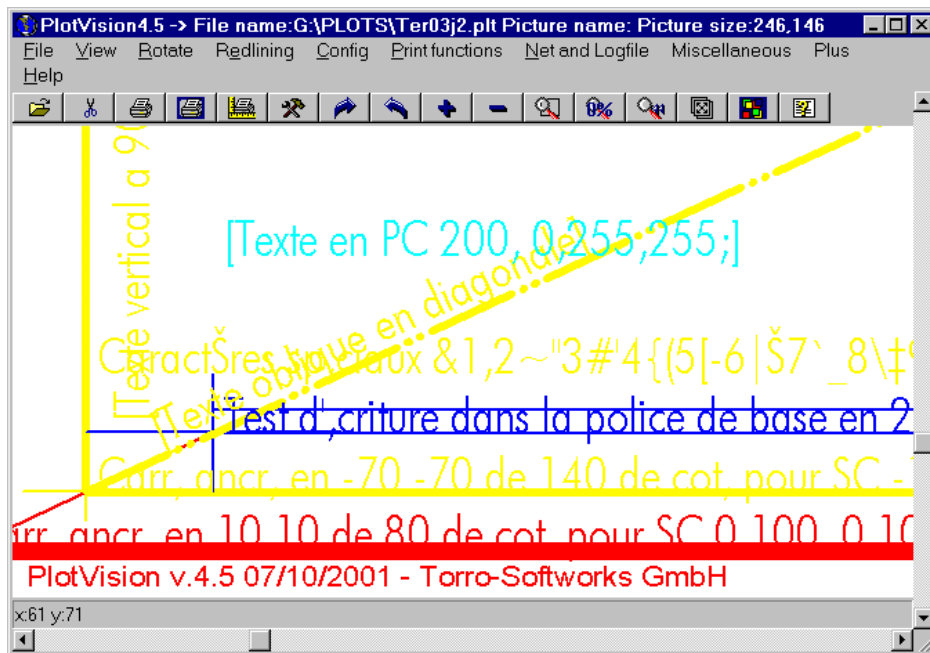
**Move stamp y**: moves the stamp according to the value inserted here in the y-direction.

**DXF output factor**: HP-GL files are in plot steps. One plot step is 0.025 millimeter. To adjust a plot file to a DXF file you may insert here a value. The best guess is 0.025.

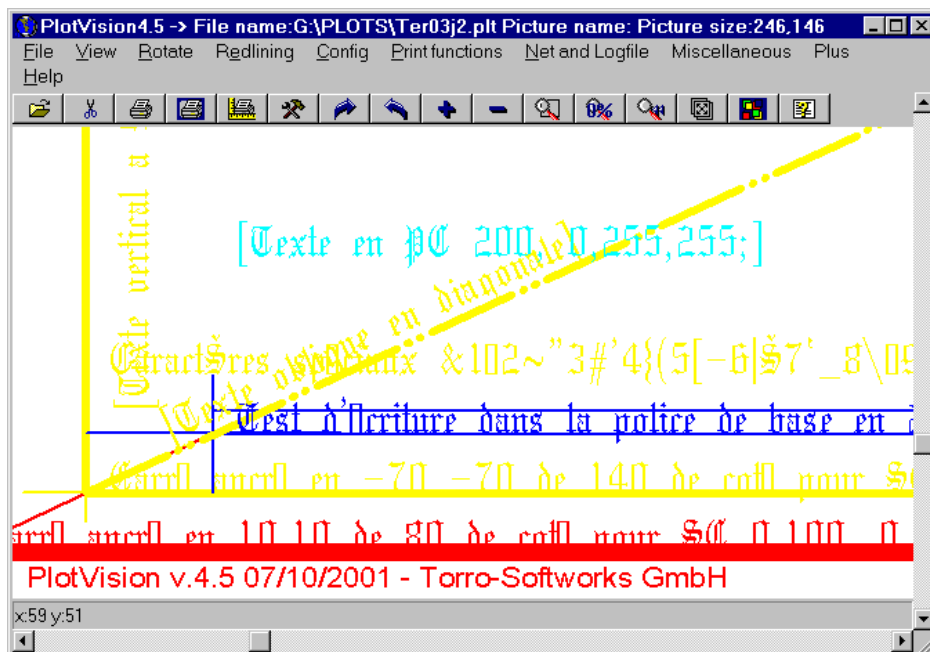
**DXF input factor**: DXF files may be in any scale you can imagine. To adjust them to what you like you may insert a factor. Default is 40.

**Ltscale**: Plot files can contain LineTypes. To adjust these you may add a value here.

**Change fonts:** lets you select a Windows font (if there are LB-commands within your drawing).

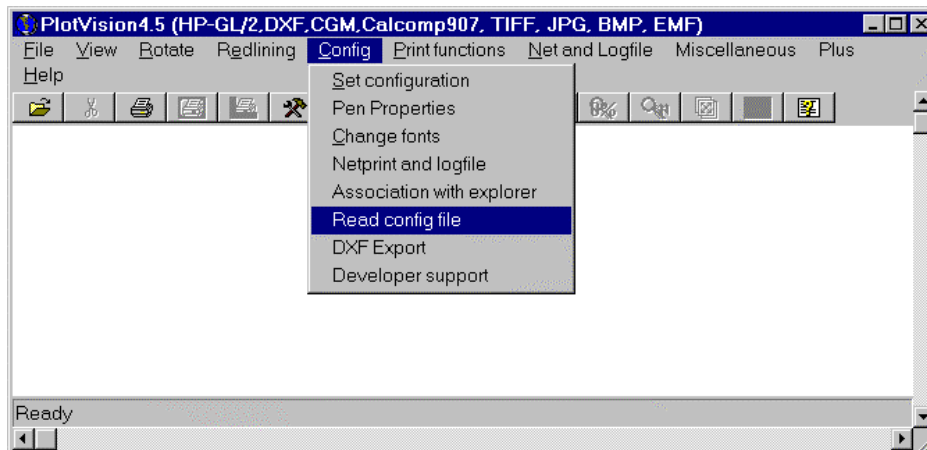


Changes with fonts „*gothic*“ also:



**Association with Explorer** allows you to associate various supported file types with Explorer.

## Read config file:



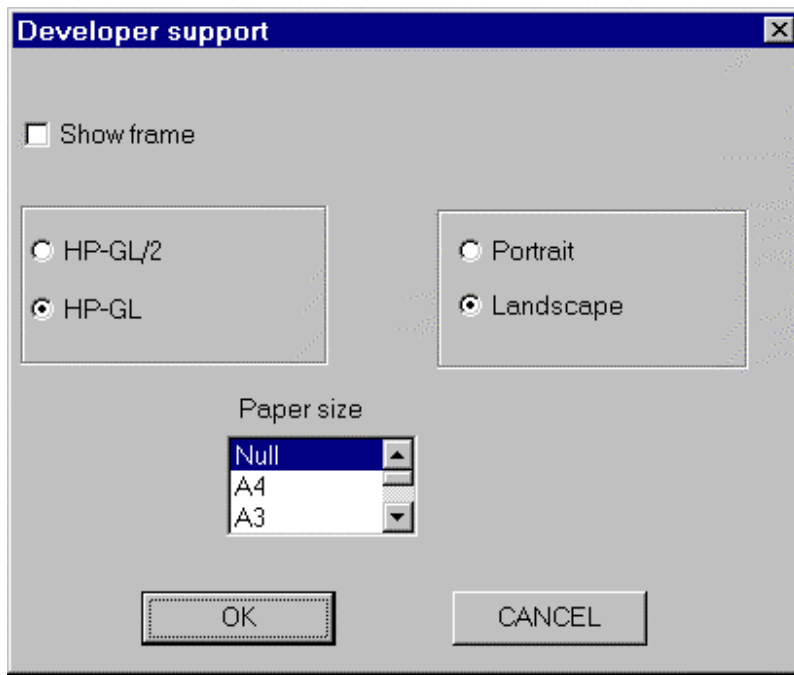
Reads a certain configuration, making sure for example that you – and other users have the same configuration. Or works like a reset of a certain configuration.

**DXF Export** displays Export DXF Config options.



You may decide which entities you export to DXF.

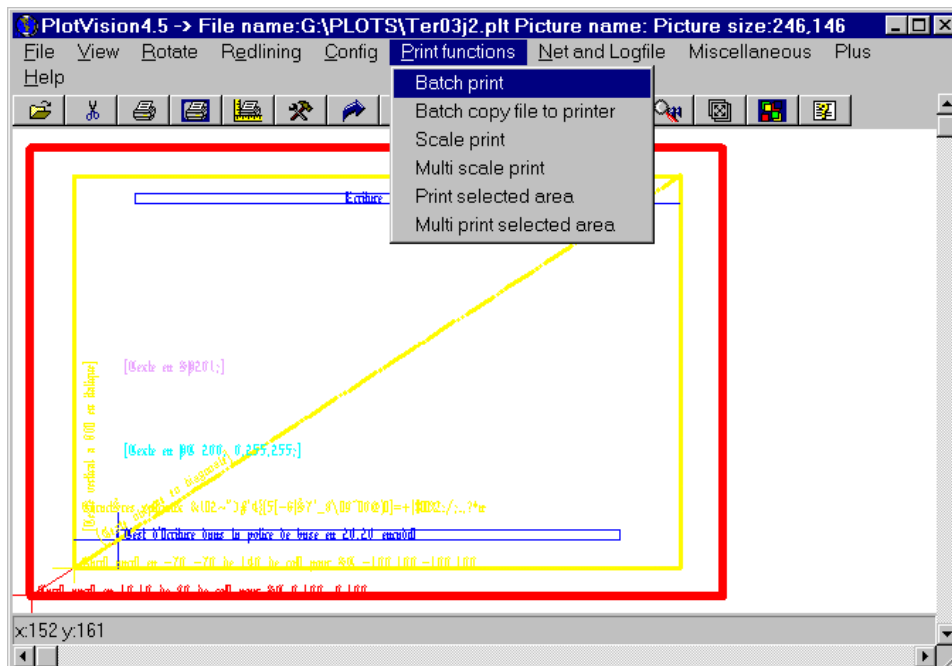
Developer support displays the developer support dialog box.



Show frame shows a frame around the paper size you select.  
HP-GL/2 or HP-GL: Decides the origin of the frame.

Portrait or Landscape: to choose if the frame is shown Portrait or landscape.

Print functions consists of:



Batch print prints a selectable number of plots. Select all plotfiles in the file open dialog – they are sent to the printer (the same way as „print screen contents“).

**Batch copy file to printer** copies a selectable number of plots. Select all plotfiles in the file open dialog – they are sent to the printer (the same way as „copy file to printer“).

**Scale print** has the following dialog:

The screenshot shows the 'Scale print' dialog box. It has a title bar with the text 'Scale print' and a close button. The dialog is divided into several sections. The first section is 'Selected paper size' with two input fields: 'Width' (288) and 'Height' (201). The second section is 'Size of the plotfile' with two input fields: 'Width' (272) and 'Height' (198). The third section is 'Plotfile' with an input field (198). The fourth section is 'Printed plotfile' with an input field (272) and a label 'Millimeter'. The fifth section is 'Scale' with an input field (1.000) and a label 'Scale'. There are three radio buttons: 'Scale print' (selected), 'Tiled print, if paper < drawing', and 'Selected area'. At the bottom, there is a 'Selected printer' field containing 'HP LaserJet 2200 Series PCL 6' and 'OK' and 'Cancel' buttons.

The plot on the screen will be printed true to scale.

That works as follows:

Select from the menu **print functions** then **scale print**.

Select your printer and paper size. The result is to be seen on the dialog box.

For example: 288 \* 201 mm

The size of the current drawing is to be read in „size of the plotfile“.

For example: 272\*198 mm

Default scale is 1 : 1.

If you want to print this drawing five times larger than drawn (or plotted), set the scale to 1 : 5 in this example.

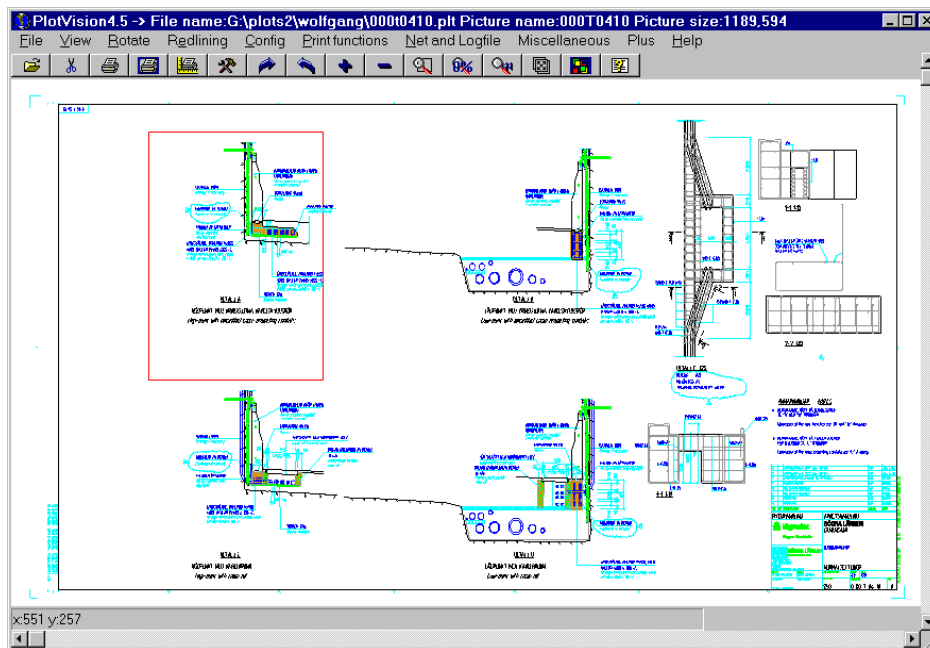
*If you select a A0 size drawing and print it to a A4 sized printer in measure 1:1 you get a number of pages which give the original A0 size drawing if you put together this tiles.*

**Multi scale print** allows you to print many drawings one after the other at once.

**Print selected area** allows you drag a box defining the area to be printed.

Makes it possible to print a defined area in measure from an (for example) A0 plot to a printer that is much smaller (for example) A4 and (therefore much cheaper). You often don't need the complete drawing to view and measure a detail.

Multiple print selected area:

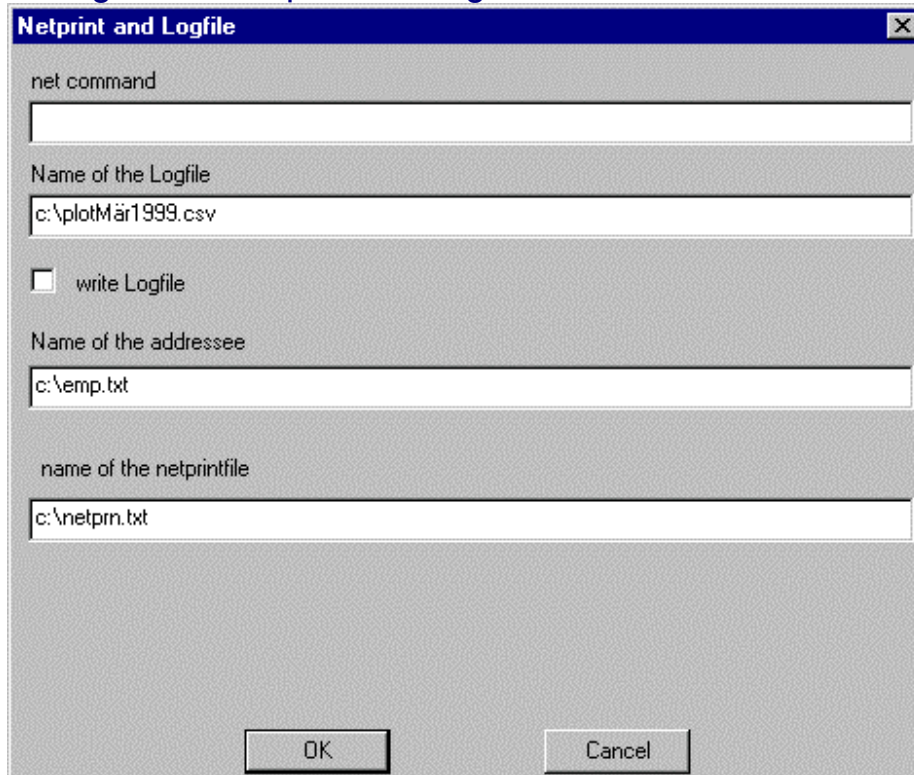


As above, but lets you print a detail – for example the “information box” in the lower right corner from a heap of drawings at once. The drawings have to be all in the same size.

## Net and Logfile

*Thanks to Mr. Rainer Franke from Ingenieurbüro Raible + Partner, Ditzingen/germany for the idea and support during the implementation of this part.*

### Configure the netprint and logfile



The screenshot shows a dialog box titled "Netprint and Logfile". It contains the following fields and controls:

- net command:** An empty text input field.
- Name of the Logfile:** A text input field containing "c:\plotMär1999.csv".
- write Logfile:** A checkbox that is currently unchecked.
- Name of the addressee:** A text input field containing "c:\emp.txt".
- name of the netprintfile:** A text input field containing "c:\netprn.txt".
- Buttons:** "OK" and "Cancel" buttons at the bottom.

In the pulldown Menu "**Configuration**" you find the "**netprint and logfile**" – dialog box. Here you can insert a net command to copy a file via a network to a printer if this printer is not connected to a port like LPT2.

**Net command** for a novell net, for example:

```
NPRINT % /NB_NT_GEN // Please ask your system administrator or network specialist
```

If this doesn't work, you may create a batch file. For example net.bat with the following contents:

```
NPRINT %1 /NB_NT_GEN // ATTENTION, %1 is the first argument
```

The net command in the dialog box would be than:

```
net.bat %
```

or with a complete path

```
c:\\net.bat % // ATTENTION; double backslash !!!
```

The call of the net command or net.bat will be done if you choose NET1 if you call **copy via net to plotter**.

The % sign will be substitute with the file name.

The **Name of the Logfile** is partial changeable. The syntax is explained from right to left.

Default is: c:\plotOkt1998.csv

The suffix „.csv“ is not changeable – it is easy to import such a file in to programs like Excel or data bases.

The year is inserted by the program.

The current month is set before it (abridged to 3 letters).

The beginning of the file name is by default "plot".

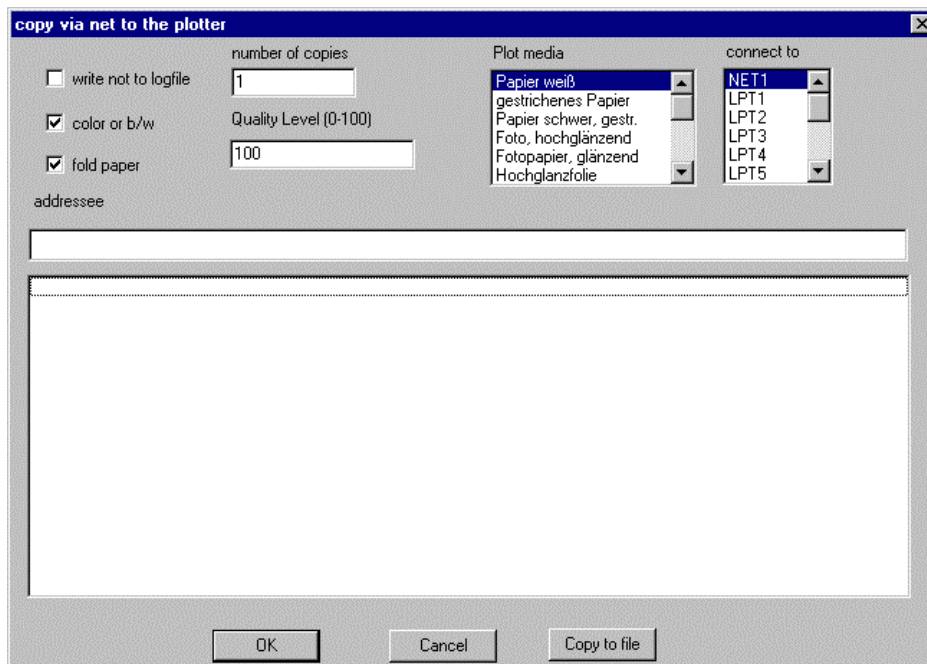
The length of the file name must be at least 18 chars.

You may switch **write logfile** on or off at this checkbox.

The **name of the addressee** may be selected as you want it. It is to collect the names of the clients. This file is limited to 1000 names. It is a simple ASCII text file which is changeable with any text editor. At any change the original file is renamed to \*.bak.

The **name of the netprintfile** may be defined here. This file contains the names of the printer in the peer-to-peer network. They are visible in the copy to printer dialog box.

## Copy via net to the plotter



**Connect to:** Default is NET1, you may also select any other connection.

**Write not to logfile** writes only the current plot **not** to logfile.

**Adressee** is the one the file is plotted for. The current adressee will be written to the file of adresees.

**Fold paper** yes or no.

**Number of copies** is possible, the file will be copied x times.

**Quality Level** here you may change the value of the QL command in the plotfile. Valid values are 0 to 100 (integer). Each plotter will make different use of this instruction depending on ist hardware technology and firmware implementation. Please read the manual of your plotter.

Below you find a **listbox** where you may select adresees from a file.

## Logfile

The contents of the log file looks like this:

Date and Time;file name; plot date and time ; adreesee; number of copies; X; Y; user name; color or b/w; folded

12.10.1998 08:10;C:\chroma.plt;29.10.1998  
10:36;Meyer+Partner;1;255;187;Torro,Farbe,1

This means:

Date and Time are the time of the creation of the plotfile.

File name is the name of the plotfile with complete path.

Plot date and time – you guess it.

Adreesee the name you gave him.

Number of copies.

X- and Y- size of the plot rounded to millimeter.

User name of the one who plotted the file.

Is this a color or black and white plot.

Will this paper become folded. 1 means yes, 0 no.


## Import in to databases or spreadsheets

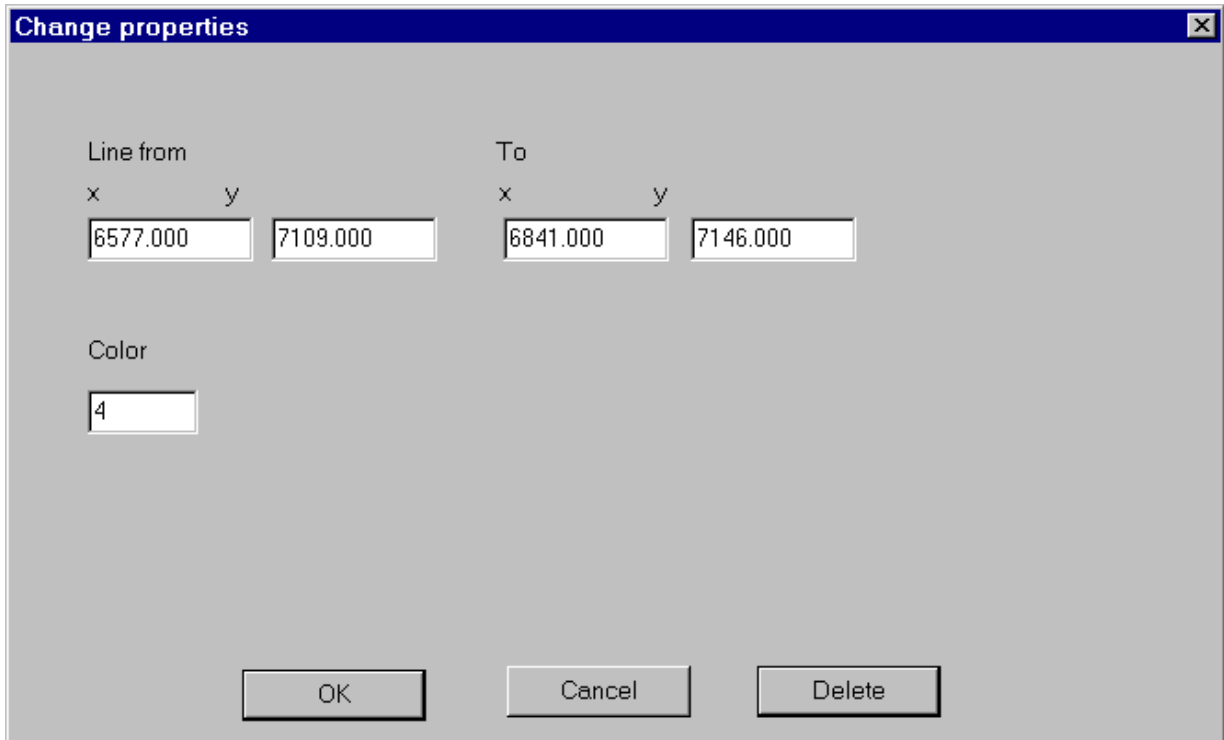
This may be different according your preferred program for this.

For Microsoft Excel it looks like that:

- run Excel
- select file and open
- select the file type „text file \*.prn;\*.txt;\*.csv“
- select the file and open it

## Miscellaneous

**Lines change/delete:** Select a line you want to change (x- and/or y- coordinates and color). Changes the cursor to . Select a line and the following dialog box appears:



The dialog box is titled "Change properties" and has a close button (X) in the top right corner. It contains the following fields and buttons:

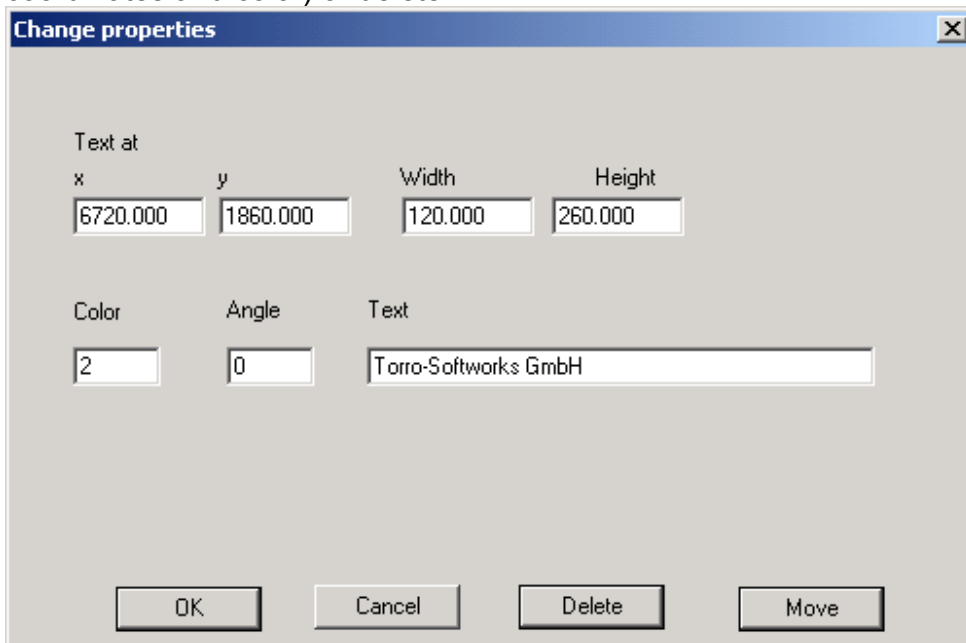
Line from		To	
x	y	x	y
6577.000	7109.000	6841.000	7146.000

Color: 4

Buttons: OK, Cancel, Delete

You may change the values, the color of the line or delete the line by pressing the Delete button.

**Text change/delete/move:** Select a text you want to change (x- and/or y- coordinates and color) or delete.




The dialog box is titled "Change properties" and has a close button (X) in the top right corner. It contains the following fields and buttons:

Text at		Width	Height
x	y		
6720.000	1860.000	120.000	260.000

Color: 2      Angle: 0      Text: Torro-Softworks GmbH

Buttons: OK, Cancel, Delete, Move

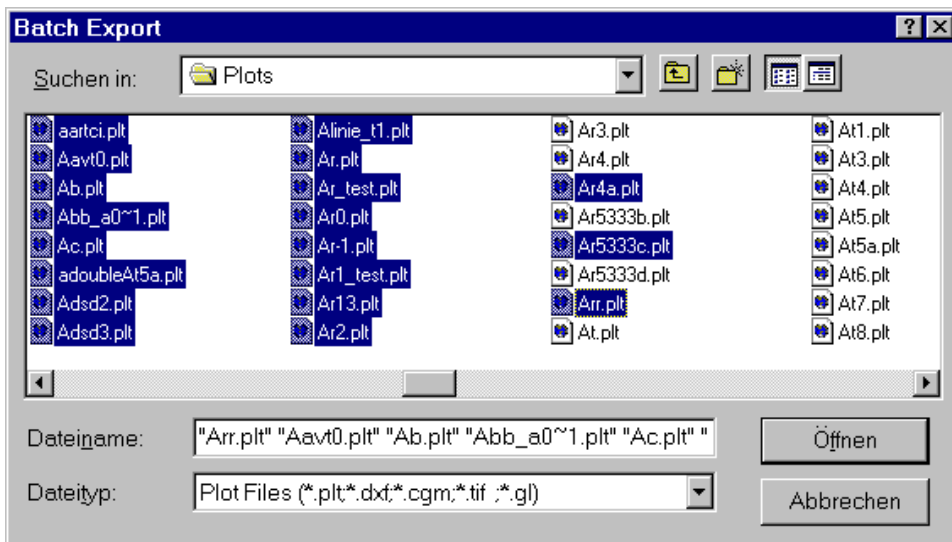
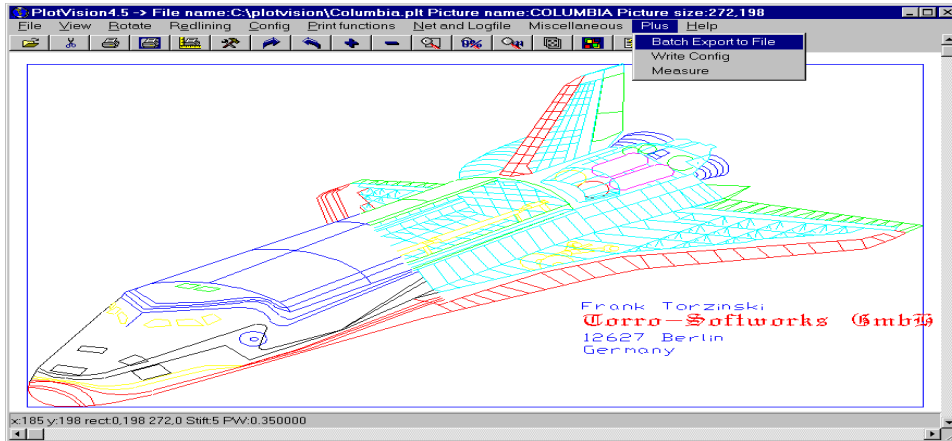
After the selection of „Move“ the cursor changes to a text cursor .

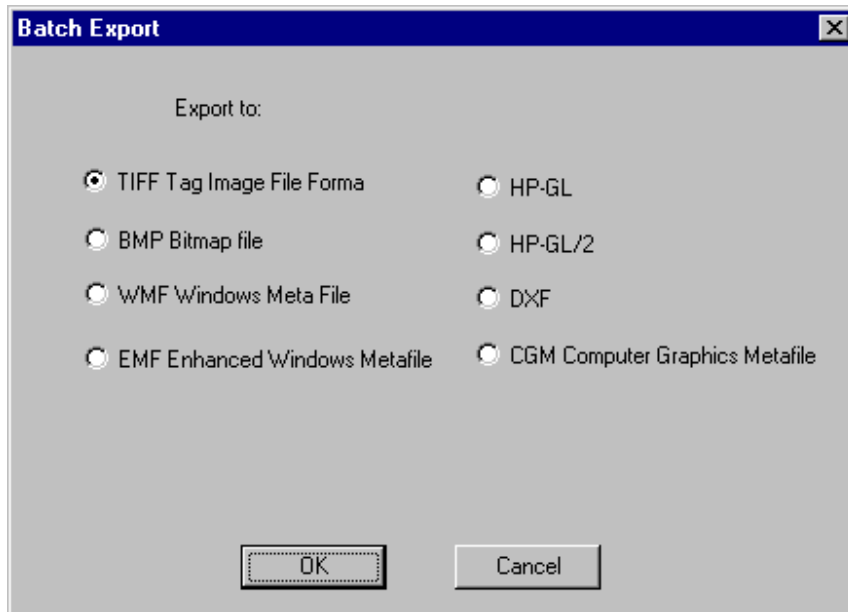
Click at the position where you want to place the text.

Delete lines inside a square deletes lines.

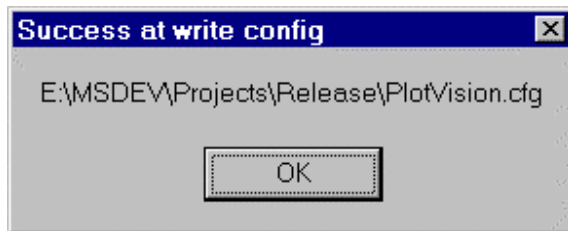
# PLUS

**Batch export to file** makes it possible to export whole directories. Select the files you want to export, then select the export format. This function reads the selected files and exports the files in the selected format with the appropriate suffix.

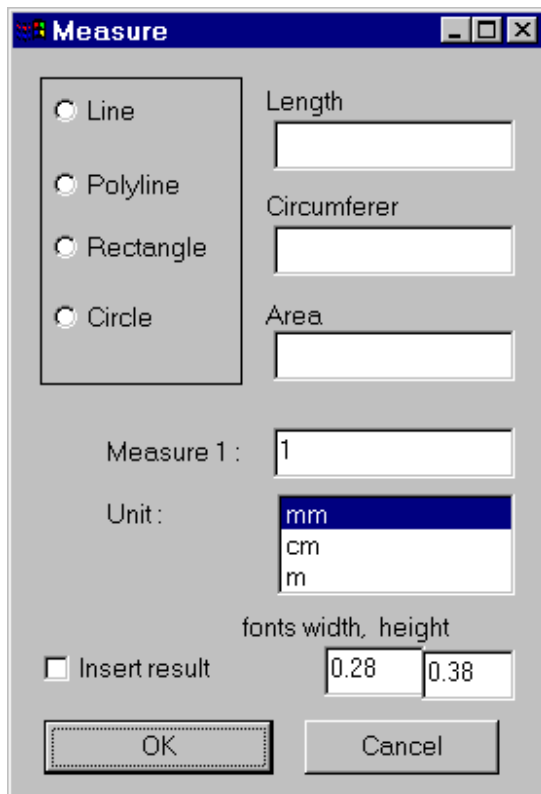





**Write config** writes the current configuration to a file. This file can be read back to restore a certain condition. For companies or CD versions it can ensure that every user has the same configuration.



**Measure** invokes the following dialog box.  
Measure the selected entity: Line, Polyline, Rectangle or Circle.



## Line

Line mode is indicated with  this cursor.

Measure: Click the left mouse button, keep it pressed to draw the line you want to measure.

Release the mouse button at the end point. The line will be shown as a red line and the length multiplied with the measure will be shown. The result is copied to the clipboard:  
Linie:381.744080

Is the checkbox „Insert result” activated is the text additional inserted in to the drawing.

To indicate that the cursor changes to a . Select the point you want to insert the text at and click on the left mouse button.

For example:381.74

## Polyline

Polyline mode is indicated with  this cursor.

Measure: Click the left mouse button, keep it pressed to draw the line you want to measure.

Release the mouse button at the end point. Repeat this as often as nessecary. The start point of the second and following line will be set exactly to the end point of the line before.

The polyline will be shown as a red lines and the length multiplied with the measure will be shown. The result is copied to the clipboard:

Polyline:1381.744080

Is the checkbox „Insert result” activated is the text additional inserted in to the drawing.

To indicate that the cursor changes to a . Select the point you want to insert the text at and click on the left mouse button.

For example:1381.74

## Rectangle

Rectangle mode is indicated with  this cursor.

Measure: Click the left mouse button, keep it pressed to draw the rectangle you want to measure.

Release the mouse button at the end point. The rectangle will be shown as a red rectangle and the length multiplied with the measure will be shown. The result is copied to the clipboard:

Rectangle Width:5524.172446 Height:3038.295944 Circumference:17124.936779

Is the checkbox „Insert result” activated is the text additional inserted in to the drawing.

To indicate that the cursor changes to a . Select the point you want to insert the text at and click on the left mouse button.

For example:Area:138100.74

## Circle

Circle mode is indicated with  this cursor.

Measure: Click the left mouse button, keep it pressed to draw the circle you want to measure.

Release the mouse button at the end point. The circle will be shown as a red circle and the length multiplied with the measure will be shown. The result is copied to the clipboard: Circle Radius:3467.764893 Circumference:21788.609422

Area:37778888.000000

Is the checkbox „Insert result” activated is the text additional inserted in to the drawing.

To indicate that the cursor changes to a . Select the point you want to insert the text at and click on the left mouse button.

For Example:R:3467.76 U:21788.61 F:37778888.00

Close the measure window with OK.

Cancel cancels the displayed measurement.

Hint: You may want to set “use pen width on screen” to OFF.

Measure lines can be deleted from the redline menu “Undo”

If you set “element properties” to “ON” in the second configuration you see in the status bar the length of lines under the cursor.

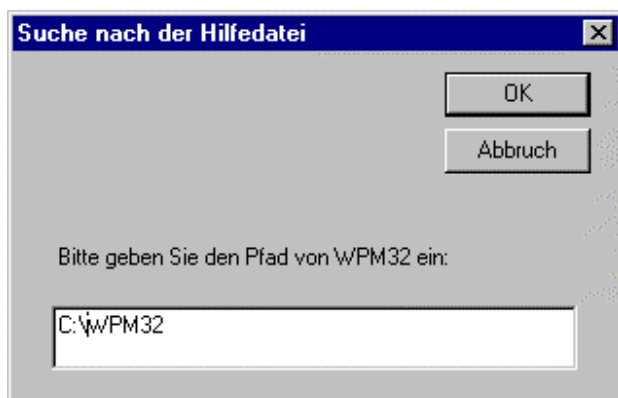
**Help** contains:

**About:** with the following dialog box



**Index** shows the index of the helpfile.

In rare cases it is necessary to put in the path of the helpfile.  
Please insert the path, where the helpfile (plotv32\_e.hlp) exists.



## 6. Trial Version

You can use this program free for a 90 day trial period.

If you find this software useful you must register this program!

For the current prices and discount please visit:

<http://www.epic-isti.com> (for US sales)

<http://www.torro-sofworks.de/html/faq.html> (for non-US sales)

Torro-Softworks GmbH  
Germany  
Frank Torzinski  
Stendaler Str. 28  
12627 Berlin.

If there are still problems with a plotfile, please:

- a) print or plot it, to be sure, it is a plotfile
- b) send me the shortest file with this problem
- c) please try to send format A or B (A4 or A3)
- d) information about the program and the plotter-driver

You can contact us directly at [Ftorzinski@torro.de](mailto:Ftorzinski@torro.de) for support.

All other rights are reserved.

PlotVision may not be changed or modified in any way except by Torro Softworks.

Plotvision may be freely distributed for the ten day trial period as long as it remains in its complete form. Regardless of how the copy is obtained, it is requested that all users comply with the licensing agreement.

## 7. End-User License Agreement (EULA) for

### Torro-Softworks Software Products

**SOFTWARE PRODUCT:** Windows Plotfile Manager 32

**VERSION:**4.3.

**LICENSES:**

#### **IMPORTANT--READ CAREFULLY**

This TORRO-SOFTWORKS EULA is a legal agreement between you (either an individual or a single entity) and TORRO-SOFTWORKS for the TORRO-SOFTWORKS SOFTWARE PRODUCT identified above. By installing, copying, or otherwise using the SOFTWARE PRODUCT, you agree to be bound by the terms of this EULA.

If you do not agree to the terms of this EULA, you are not authorized to install and/or use the SOFTWARE PRODUCT.

## **SOFTWARE PRODUCT LICENSE**

The SOFTWARE PRODUCT is protected by copyright laws and international copyright treaties, as well as other intellectual property laws and treaties. The SOFTWARE PRODUCT is licensed, not sold.

### **1. GRANT OF LICENSE.**

This EULA grants you the following rights with respect to the SOFTWARE PRODUCT:

TORRO-SOFTWORKS grants you an individual, personal, nonexclusive license to make and use copies of the SOFTWARE PRODUCT for the sole purpose of using it. You may install copies of the SOFTWARE PRODUCT on an unlimited number of computers provided that you are the only individual using the SOFTWARE PRODUCT. If you are an entity, TORRO-SOFTWORKS grants you the right to designate one individual within your organization to have the right to use the SOFTWARE PRODUCT in the manner provided above.

### **2. UPGRADES/UPDATES**

If the SOFTWARE PRODUCT is an upgrade from another product, whether from TORRO-SOFTWORKS or another supplier, you may use or transfer the SOFTWARE PRODUCT only in conjunction with that upgraded product, unless you destroy the upgraded product. If the SOFTWARE PRODUCT is a TORRO-SOFTWORKS product, you now may use that upgraded product only in accordance with this EULA. If the SOFTWARE PRODUCT is an upgrade of a component of a package of software programs which you licensed as a single product, the SOFTWARE PRODUCT may be used and transferred only as part of that single product package and may not be separated for use on more than one computer.

### **3. DESCRIPTION OF OTHER RIGHTS AND LIMITATIONS.**

- Limitations on Reverse Engineering, Decompilation, and Disassembly.

You may not reverse engineer, decompile, or disassemble the object code portions of the SOFTWARE PRODUCT, except and only to the extent that such activity is expressly permitted by applicable law notwithstanding this limitation.

- Software Transfer.

You may permanently transfer all of your rights (not a part of them) under this EULA, provided the recipient agrees to the terms of this EULA.

- Termination.

Without prejudice to any other rights, TORRO-SOFTWORKS may terminate this EULA if you fail to comply with the terms and conditions of this EULA. In such event, you must destroy all copies of the SOFTWARE PRODUCT and all of its component parts.

### **4. COPYRIGHT.**

All title and copyrights in and to the SOFTWARE PRODUCT (including but not limited to any images, photographs, animations, video, audio, music, and text incorporated into the SOFTWARE PRODUCT), the accompanying printed materials, and any copies of the SOFTWARE PRODUCT are owned by TORRO-SOFTWORKS or its suppliers. The SOFTWARE PRODUCT is protected by copyright laws and international treaty provisions. Therefore, you must treat the SOFTWARE PRODUCT like any other copyrighted material.

## **LIMITED WARRANTY**

**NO WARRANTIES.**

TORRO-SOFTWORKS expressly disclaims any warranty for the SOFTWARE PRODUCT. The SOFTWARE PRODUCT and any related documentation is provided "as is" without warranty of any kind, either express or implied, including, without limitation, the implied warranties or merchantability, fitness for a particular purpose, or noninfringement. The entire risk arising out of use or performance of the SOFTWARE PRODUCT remains with you.

## **NO LIABILITY FOR DAMAGES.**

In no event shall TORRO-SOFTWORKS or its suppliers be liable for any damages whatsoever (including, without limitation, damages for loss of business profits, business interruption, loss of business information, or any other pecuniary loss) arising out of the use of or inability to use this TORRO-SOFTWORKS product, even if Torro-Softworks has been advised of the possibility of such damages.

FTorzinski@torro.de  
Torro-Softworks GmbH  
Germany  
Frank Torzinski  
Stendaler Str. 28  
12627 Berlin.  
voice: +49 03 9909365  
fax: +49 30 99402064  
<http://www.torro-softworks.de>  
<http://www.torro-softworks.com>

## 8. Software Maintenance and Support Agreement

### *Software Maintenance and Support Agreement*

**THIS SOFTWARE MAINTENANCE AND SUPPORT AGREEMENT** ("Agreement") is made and entered into as of this \_\_\_ day of \_\_\_\_\_, 20\_\_ (the "Effective Date"), by and between Torro-Softworks, Inc., a Berlin GMBH corporation having a principal place of business Stendaler Str. 28 12627 Berlin, Germany ("Torro-Softworks"), and \_\_\_\_\_, a \_\_\_\_\_ corporation, having its principal office at \_\_\_\_\_ ("Licensee").

#### **BACKGROUND**

**This Agreement is intended to be supplementary to the End User License Agreement between Torro-Softworks and Licensee. The terms and conditions of the License Agreement and all amendments thereto are hereby acknowledged and reaffirmed. All capitalized terms not otherwise defined herein shall have the meaning ascribed to them in the License Agreement.**

**NOW, THEREFORE**, in consideration of the premises set forth above and the mutual covenants contained herein, and intending to be legally bound hereby, the parties agree as follows:

1. **Maintenance Services**. During the Term (as defined herein) of this Agreement, Torro-Softworks will furnish the following maintenance, support and other services ("Services") for the Licensed Software:

1.1. All updates, enhancements, upgrades or releases of the Licensed Software and related information and documentation ("Updates"); and

1.2. Reasonable access by telephone and/or Internet to Torro-Softworks's technical staff (not to exceed four hours per month) for consultation in the use and operation of the Licensed Software.

2. **Maintenance Fee**. In consideration for the Services, Licensee shall pay Torro-Softworks the yearly fee as agreed upon by both parties hereto ("Maintenance Fee"). Licensee shall pay Torro-Softworks the Maintenance Fee on or before the first day of anniversary of the signing of this agreement.

3. **Term**. The initial term ("Initial Term") of this Agreement shall be for a period of three years. After the Initial Term, Licensee shall have the option of renewing this Agreement for additional one (1) year terms (each, a "Renewal Term" and together with the Initial Term, the "Term") by

giving Torro-Softworks notice no less than thirty (30) days prior written notice of such renewal. Torro-Softworks may terminate this Agreement (i) immediately upon breach of this Agreement by Licensee, which breach remains uncured fifteen (15) days after written notice thereof from Torro-Softworks, or (ii) upon no less than ninety (90) days prior written notice to Licensee. Notwithstanding anything to the contrary herein, this Agreement shall automatically terminate upon termination of the License Agreement.

4. **License.** All Services provided to Licensee hereunder shall be deemed to be a part of the Licensed Software as that expression is used in the License Agreement, and all terms and conditions of the License Agreement not inconsistent with the express provisions of this Agreement shall be applicable to such Services, including without limitation those relating to use, copying, assignments, ownership, copyright, trade secret and patent protection and applicable law.

5. **Limited Warranty:** Torro-Softworks warrants the media on which the Updates are provided to be free from defects in materials and workmanship for ninety (90) days after delivery. Defective media may be returned for replacement without charge during the ninety (90) day warranty period unless the media have been damaged by accident or misuse. Torro-Softworks warrants, for ninety (90) days after purchase, that any unaltered Update will substantially conform to the documentation that accompanies it (Torro-Softworks expressly reserves the right to provide the documentation on the same media as the Updates). Any implied warranties are limited to the duration of the express warranties stated in this Section 5. Torro-Softworks does not warrant that: (a) operation of any of the Updates shall be uninterrupted or error free, (b) that functions contained in the Updates shall operate in combinations which may be selected for use by Licensee or meet Licensee's requirements, or (c) that the Updates will detect all viruses, Trojan horses, worms or other software routines or hardware components designed to permit unauthorized access to or to disable, erase or otherwise harm any software, hardware or data. Torro-Softworks's entire liability and your exclusive remedy shall be, at the option of Torro-Softworks, either (a) return of the price paid or (b) repair or replacement of any Update that does not meet the foregoing warranty, when returned to Torro-Softworks. This limited warranty is void if failure of the Update has resulted from accident, abuse or misapplication. Any replacement software will be warranted for the remainder of the original warranty period or thirty (30) days, whichever is longer.

**THE FOREGOING EXPRESS LIMITED WARRANTIES ARE IN LIEU OF AND, TO THE MAXIMUM EXTENT PERMITTED BY APPLICABLE LAW, TORRO-SOFTWORKS SPECIFICALLY DISCLAIMS ANY AND ALL OTHER WARRANTIES, EXPRESS OR IMPLIED, INCLUDING BUT NOT LIMITED TO IMPLIED WARRANTIES OF MERCHANTABILITY AND FITNESS FOR A PARTICULAR PURPOSE, WITH REGARD TO THE SERVICES AND THE PROVISION OF OR FAILURE TO PROVIDE SUCH SERVICES.**

**TO THE MAXIMUM EXTENT PERMITTED BY APPLICABLE LAW, IN NO EVENT WILL TORRO-SOFTWORKS OR ITS DISTRIBUTORS OR DEALERS BE LIABLE FOR SPECIAL, INCIDENTAL, INDIRECT OR CONSEQUENTIAL DAMAGES WHATSOEVER (INCLUDING, WITHOUT LIMITATION, DAMAGES FOR LOSS OF INCOME, PROFITS, USE OF INFORMATION OR ANY OTHER PECUNIARY LOSS) ARISING OUT OF OR IN CONNECTION WITH THE SERVICES OR THE USE OF OR INABILITY TO USE ANY UPDATE, EVEN IF TORRO-SOFTWORKS HAS BEEN ADVISED OF THE POSSIBILITY OF SUCH DAMAGES. TORRO-SOFTWORKS'S ENTIRE LIABILITY UNDER ANY PROVISION OF THIS AGREEMENT SHALL BE LIMITED TO THE MAINTENANCE FEES PAID BY LICENSEE HEREUNDER.**

**Consumer Rights:** For personal, family or household use of the Services, some states and provinces do not allow the exclusion or limitation of incidental or consequential damages or limitations on how long an implied warranty lasts, so the above limitations or exclusions may not apply to you. These warranties give you specific legal rights and remedies; you may also have other rights and remedies which arise from operation of law and vary from state to state or province to province.

**6.U.S. Government Restricted Rights.** The Services are provided with RESTRICTED RIGHTS. Use, duplication or disclosure by the Government is subject to restrictions as set forth in subparagraph (c)(1)(ii) of the Rights in Technical Data and Computer Software clause at DFARS 252.227-7013 or subparagraphs (c)(1) and (2) of the Commercial Computer Software - Restricted Rights at 48 CFR 52.227-19, as applicable. Manufacturer is Torro-Softworks, Stendaler Str. 28 12627 Berlin, Germany.

**7.Force Majeure.** Torro-Softworks shall not be liable to Licensee for any failure or delay caused by events beyond Torro-Softworks's reasonable control, including, without limitation, Licensee's failure to furnish necessary information; sabotage; failure or delays in transportation or communication; failures or substitutions of equipment; labor disputes; accidents; shortages of labor, fuel, raw materials or equipment; or technical failures.

**8. Non-Assignment.** Licensee shall have the right to assign this Agreement to a successor by merger or a purchaser of all or substantially all of its assets relating to the business of which the use or sale of the Licensed Software are a part if the successor agrees in writing to be bound by this license. Torro-Softworks shall have the right to assign this Agreement, in whole or in part, and/or to subcontract its performance obligations hereunder, at any time and from time to time in its sole discretion.

**9.Entire Agreement.** This Agreement, together with the License Agreement and any and all exhibits, schedules and appendices attached hereto and thereto, constitute the entire agreement between the parties and supersede all prior oral or written representations, agreements, promises, or other communications, which pertain to the covered subject matter. This Agreement may not be amended or modified except by a written agreement signed by authorized representatives of each party.

**10.Governing Law.** This Agreement is made under and shall be governed by and construed in accordance with applicable laws.

**11.Notices.** Any notice required under this Agreement shall be given in writing and delivered personally or by telecopy (with transmission confirmed), registered or certified mail, return receipt requested, or overnight delivery service to the parties at their addresses noted above or such other addresses as shall have been designated to each other in writing. All notices to Torro-Softworks shall be directed to the attention of Frank Torzinski, President. All notices to Licensee shall be directed to the attention of \_\_\_\_\_.

**12.Severability.** If any provision of this Agreement shall be held unenforceable or invalid, the remaining parts shall remain in full force and effect.

**13.Enforcement.** The failure of either party in any one or more instances to insist upon strict performance of any of the terms or provisions of this Agreement shall not be construed as a waiver or relinquishment, to any extent, of the right to assert or rely upon any such terms or provisions on any future occasion. The headings are for convenience only and do not affect the meaning of this Agreement.

14. **Counterparts.** The parties may execute this Agreement in one or more counterpart copies, each of which shall be deemed an original.

**IN WITNESS WHEREOF**, the parties hereto, each by a duly authorized representative, have executed this Agreement as of the date first written above.

**TORRO-SOFTWORKS, INC.** ("Torro-Softworks") \_\_\_\_\_ ("Licensee")

By: \_\_\_\_\_ By: \_\_\_\_\_

Its: \_\_\_\_\_ Its: \_\_\_\_\_